

SEPTEMBER 2011

EXPIRES 9/30/11

Rochester

Phone 585-235-4500
800-477-7417
Fax 585-321-1201

Syracuse

Phone 315-437-5406
800-836-7400
Fax 315-437-5675



TRAILER & TRUCK EQUIPMENT

Buffalo

Phone 716-683-2250
800-444-7417
Fax 716-683-2257

Albany

Phone 518-713-2170
877-808-9808
Fax 518-713-2177

OUR VOLUME BUYING MEANS YOU SAVE MONEY

GENUINE WEBB DRUMS

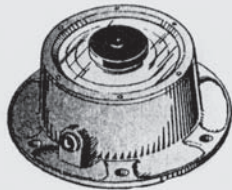
"Don't Risk Using Import Drums"



Replaces Gunite 3600A
Dayton 03-123207

\$84⁶⁵ ea.

4009 CAPS



\$5⁷⁵ EA.



PIGGY BACK KIT

3030 Piggy
-Back Kit

\$36⁶⁹ EA.

BRAKLEEN



\$2⁹⁹ can

NEWAY LEVELING VALVE



\$46²⁵ EA.

SLOAN GLADHANDS



\$26⁷⁴ EA.

MERITOR 23,000 SHOES



Q 4515 **\$16⁵²** w/exch.
Q+ 4707 **\$18⁰⁷** w/exch.

AUTOMATIC SLACK ADJUSTERS

Meritor	R801073 R801074	\$64⁷⁷ ea.
Haldex	HA40010211 HA40010212	\$68⁵⁰ ea.
Gunite	GU-AS1041	\$66⁴⁸ ea.
Stemco	MK41100S MK42106S	\$54¹⁶ ea.

STEMCO SEALS

372-7097	\$26⁵²
392-9131	\$34³⁶

HOSE END KITS

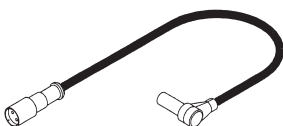
#31402

\$2³⁸ ea.

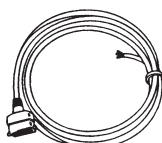


WE ALSO STOCK A COMPLETE LINE OF MERITOR & HALDEX ABS PARTS

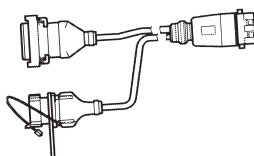
SENSORS



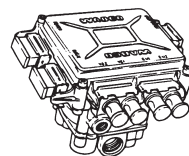
CABLES



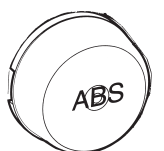
ADAPTERS



VALVES



LIGHTS



You can order parts on the web at www.ststrailer.com





**TRAVELING
AXLE
TRAILERS**
TAIL TRAILERS
TAG TRAILERS



**REEFERS
DRY FREIGHT VANS
FLATBEDS**



**CENTRAL & WESTERN NY'S LARGEST
TRAILER & TRUCK EQUIPMENT CO.**



**WALKING
FLOORS
DUMPS
FLATS**



**HYD. DETACHABLE
LOWBOYS
DOUBLE DROP &
SPECIALIZED FLATS
RED RIVER LIVE BOTTOMS
PNEUMATIC TANK TRAILERS**

CALL ANY OF OUR FOUR LOCATIONS FOR COMPLETE SALES & SERVICE:

**SYRACUSE
PETE: 315-437-5406**

**ALBANY
1-800-836-7400**

**BUFFALO-ROCHESTER
TIM: 585-967-1707**



**WALKING
FLOOR,
NICE!**

2012 MAC Walking Floor Trailer - In Stock, 48'x102" Keith 2299 Floor w/31/2" CLY, flow thru tailgate, 25,000# axles, NY Permit Spec's!



**TRI
AXLE**

2010 MAC Dump Tri Axle w/All 3 Down, 36'x102", 5'6" height, frame type, air ride, alum. comp., 2 way gate, ground control, in stock, call!



**AIR RIDE
FLAT**

New 2012 MAC Flatbed Trailers, 48'x102", air ride, alum. comp., wood & alum. floor, 12 winches on track, in stock!



53' AIR RIDE

2012 Utility 53' Dry Van Trailers In Stock, air ride, swing doors, 295/22.5 tires, stk# 15347, call!

WANTED!
**WILL BUY
CLEAN USED
TRAILERS!**
\$\$ CALL \$\$



IN STOCK!

2011 MAC Dump 42'x96", frame type, steel comp., spring susp., ready to work, stk# ST15499.



**2012 REEFER
GOING FAST!**

(8) New 2012 Utility 53'x102" Alum. Reefers, air ride susp., alum. floor, 275/22.5 tires, stk# ST15418-ST15425.



**GREAT DANE
REEFER**

2004 Great Dane 53' Reefer Trailer w/Carrier Unit, air ride, alum. floor, nice shape, stk# ST15524, \$19,900.



**LIKE NEW
TRI AXLE**

2008 MAC Dump Trailer, Like New, 34'x96", frame type, air ride, steel comp., tri axle, L/A, elec. flip tarp, near new, stk# ST15532.

CHECK OUT ALL OF OUR INVENTORY ON OUR WEB PAGE WWW.STSTRAILER.COM



GALVANIZED

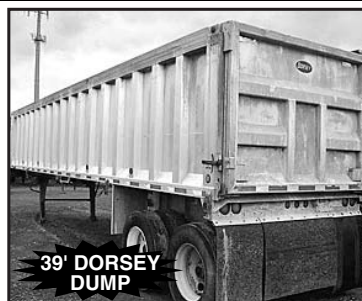
2011 Landoll 51'x102" Flat, air ride, Apitong floor, wireless remote control.



**NEWER
REEFER**

**LOW
HOURS**

2007 Wabash 53'x102" Reefer, Very Clean, Low Hours, air ride, alum. floor, stk# ST15535.



**39' DORSEY
DUMP**

2001 Dorsey 39'x96" Frame Type Dump, air ride susp., alum. comp., 11 R24.5 tires, nice, stk# ST15529.

3496 COURT STREET • SYRACUSE, NEW YORK 13206 • (315) 437-5406 • (800) 836-7400 • FAX: (315) 437-5615
6495 TRANSIT RD • BOWMANVILLE (BUFFALO) NY • (800) 444-7417 • FAX: (716) 683-2257
20 TRANSPORT DRIVE • ROCHESTER, NY 14623 • (585) 235-4500 • (800) 477-7417 • FAX: (585) 321-1201
1912 CENTRAL AVENUE • ALBANY, NEW YORK 12205 • (518) 713-2170 • (877) 808-9808 • FAX: (518) 713-2177

