

PC RANGE

COMPACT LIGHT-WEIGHT SOLUTIONS BETWEEN ONE AND FOUR METRE TONNES

LIFETIME EXCELLENCE



LIFETIME EXCELLENCE

PALFINGER loader cranes are convincing due to their superior life-cycle performance. They are the most economical and also the most reliable over the entire product life. From solution finding to resale.

- Better solutions
- Better efficiency
- Better ergonomics
- Higher availability
- More reliability
- Better ecology
- Higher serviceability
- Higher value retention

- High value retention due to coating technology
- Optimum protection thanks to internal oil ducts in the extension cylinders
- Load holding valves prevent the crane boom from dropping
- Extended range of applications thanks to the optional radio remote control and cable winch



FEATURING MODERN CRANE TECHNOLOGY. THE SMALL CRANE RANGE SETS NEW STANDARDS.

12 Highlights



Slewing mechanism
Maximum performance in minimal space

Greater efficiency thanks to lightweight and maintenance-friendly worm drive. This allows precise slewing of the crane.



Control console
Communication with the operator

The control console can be positioned as desired and protects the hydraulic control block against damage. In the CE version, PC 2700 and PC 3800 are equipped with a control stand on both sides.



Internal oil feeds
Maximum protection thanks to compact design

The internal oil ducts enable a compact extension boom system design and ensure maximum protection against damage.



Stability monitoring system
Easy and safe

In the CE version, PC 2700 and PC 3800 are equipped with a stability monitoring system. The crane can only be operated safely when the outrigger and stabilizers are fully extended.



Hydraulic overload protection
In-built safety function

In the CE version, PC 2700 and PC 3800 are equipped with hydraulic overload protection. When the load limits are reached, all movements that could further increase the lifting moment are stopped.



Coating technology
Top quality surface protection at a glance

The KTL coating lays the foundation for a perfect surface protection. Afterwards the components are either coated in the powder-coating facility or are finished with a two-components-topcoat. High value retention and excellent corrosion protection for the whole life of a crane.



Radio remote control
Ergonomic one-hand operation

We also offer a proportional remote control for the smallest PALFINGER cranes. Ergonomic, robust and low cost. The control valve and receiver are protected inside a metal case.



Cable winch
The perfect complement

A cable winch vastly increases the potential applications of a PC crane. With a lifting power of 800 kg, it is the ideal solution for small cranes. Also available with an extension stop and limit switch.



Power packs
For PC 1500 and PC 2700

For PC 1500 with 1.5 kW and for PC 2700 with 4 or 4.5 kW of power. Specially designed for the PC series cranes, the power packs are available in 12V or 24V versions. They are protected inside a robust case and are easy to maintain.



Stabilizer system BS 008
For PC 1500 and PC 2700

Designed to achieve optimum stability with a low dead weight. This stabilizer can also be fitted with a stability monitoring system. This is available for both cranes, but only as an option on the PC1500.



Stabilizer system BS 010
For PC 3800

Depending on the set-up situation, this stabilizer with a double crossbeam can be supplied without an outrigger, or with one or two outriggers. This CE version of this stabilizer can also be fitted with a stability monitoring system.



Stabilizer system BS 013
For PC 1500 and PC 2700

This stabilizer is available with manual extensions on both sides and can be ordered with pivoting support cylinders as an option. Mandatory stability monitoring is standard equipment on the CE version.



Stabilizer system BS 014
For PC 1500 and PC 2700


This stabilizer is equipped with a manual extension on one side and can be fitted with pivoting support cylinders as an option. Extended support cylinders are also available as an option.



PC 1500

COMPACT

EXTENSION BOOM VARIATIONS



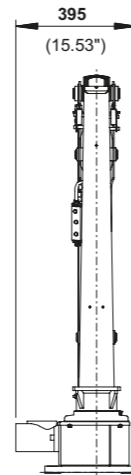
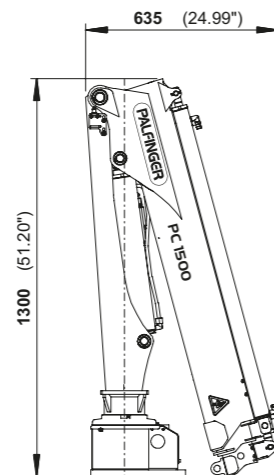
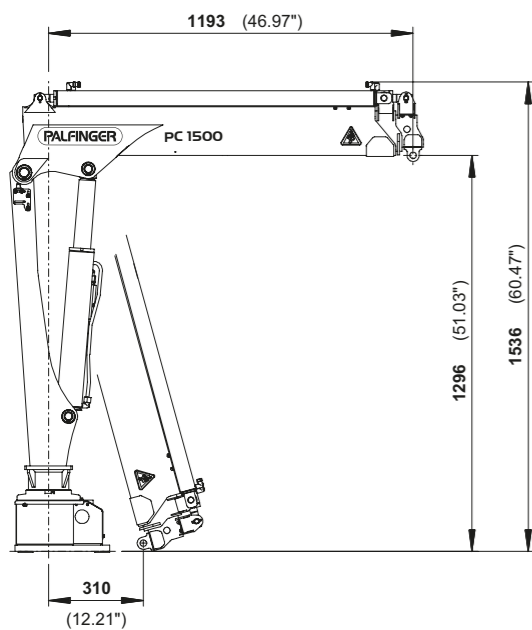
m	1.2	2.1	3.1	4.2
kg max.	990	630	440	270

AV1

Technical specifications EN 12999 H1-B2

Max. lifting moment	1.4 mt/13,6 kNm	10020 ft. lbs
Max. lifting capacity	990 kg/9,7 kN	2200 lbs
Max. hydraulic outreach	3.1 m	10' 2"
Max. manual outreach	4.2 m	13' 9"
Slewing angle	325°	
Slewing torque	0.20 mt/2.0 kNm	1480 ft.lbs
Fitting space required (std.)	0.40 m	1' 4"
Width folded	0.64 m	2' 1"
Max. operating pressure	200 bar	2900 psi
Recommended pump capacity	6 l/min	1.6 US gal./min
Dead weight (std.)	164 kg	360 lbs

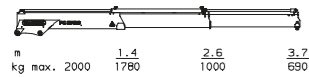
DIMENSIONS



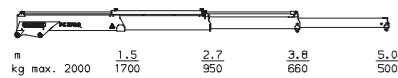
PC 2700

COMPACT

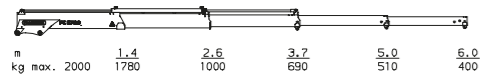
EXTENSION BOOM VARIATIONS



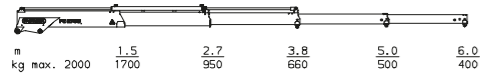
A



B

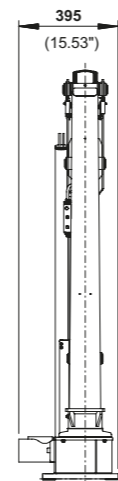
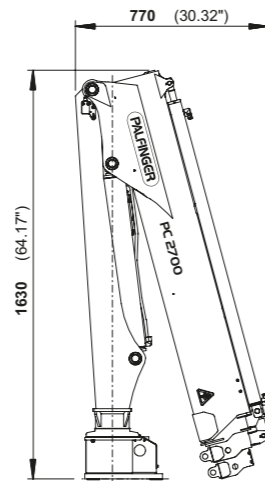
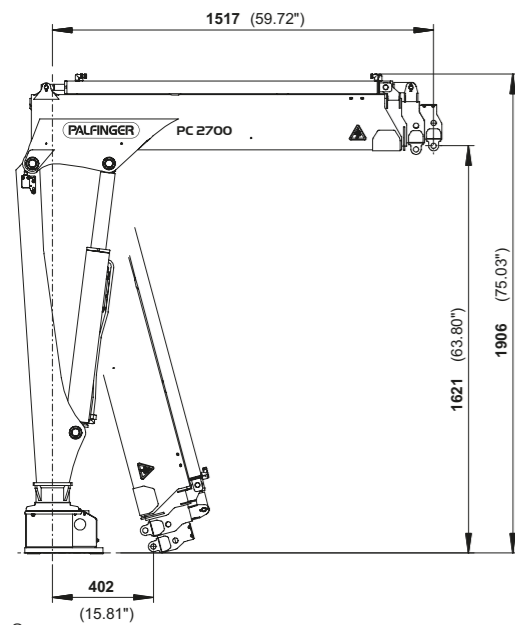


Non-CE – A V2



Non-CE – B V1

DIMENSIONS



Technical specifications EN 12999 H1-B2

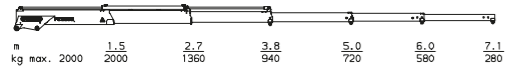
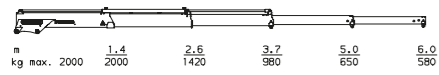
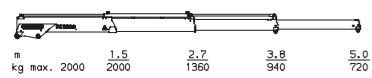
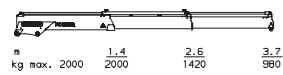
Max. lifting moment	2.6 mt/25.8 kNm	19010 ft.lbs
Max. lifting capacity	2000 kg/19.6 kN	4400 lbs
Max. hydraulic outreach	5.0 m	16' 5"
Max. manual outreach	6.0 m	19' 8"
Slewing angle	325°	
Slewing torque	0.31 mt/3.0 kNm	2210 ft.lbs
Fitting space required (std.)	0.40 m	1' 4"
Width folded	0.77 m	2' 6"
Max. operating pressure	200 bar	2900 psi
Recommended pump capacity	9 l/min	2.4 US gal./min
Dead weight (std.)	207 kg	460 lbs



PC 3800

COMPACT

EXTENSION BOOM VARIATIONS



A

B

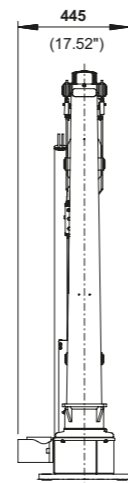
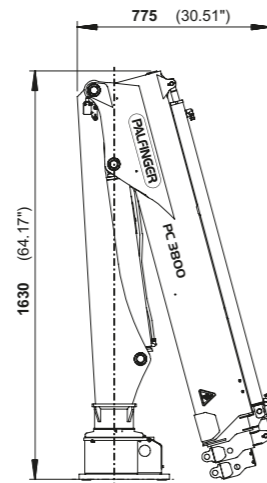
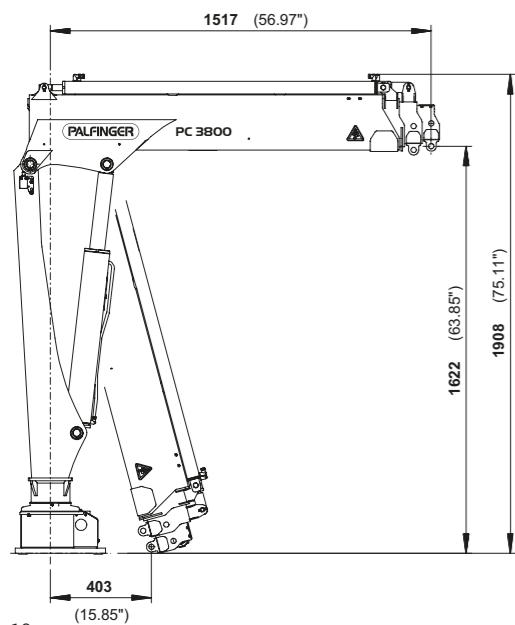
Non-CE – A V2

Non-CE – B V2

Technical specifications EN 12999 H1-B2

Max. lifting moment	3.7 mt/36.5 kNm	26930 ft.lbs
Max. lifting capacity	2000 kg/19.6 kN	4400 lbs
Max. hydraulic outreach	5.0 m	16' 5"
Max. manual outreach	7.1 m	23' 4"
Slewing angle	325°	
Slewing torque	0.38 mt/3.7 kNm	2730 ft.lbs
Fitting space required (std.)	0.45 m	1' 6"
Width folded	0.77 m	2' 6"
Max. operating pressure	200 bar	2900 psi
Recommended pump capacity	12 l/min	3.2 US gal./min
Dead weight (std.)	238 kg	520 lbs

DIMENSIONS





KP-HPKPCRANGEM2+EN

Cranes shown in the leaflet are partially optional equipped and do not always correspond to the standard version. Country-specific regulations must be observed. Dimensions may vary. Subject to technical changes, errors and translation mistakes.

PK 5.001 SLD 1 | PK 5.001 SLD 3 | PK 5.501 SLD 5

THE LINKAGE SYSTEM IMPROVES THE CRANE GEOMETRY

LIFETIME EXCELLENCE



OPTIMUM USE OF PAYLOAD

- Shorter load cycle times due to High Speed Extension
- Perfect appearance and extremely high value retention thanks to coating technology
- Maximum utilisation of the working range thanks to extended HPSC
- Higher payloads due to intelligent lightweight design





ABILITY TO WORK EFFICIENTLY AT THE HIGHEST LEVEL



Single Link

More power on the hook

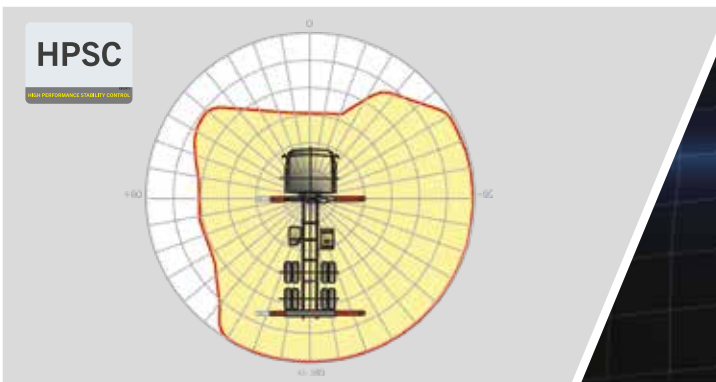
The knuckle joint significantly improves the crane's motion geometry.



High Speed Extension

For efficient assignments

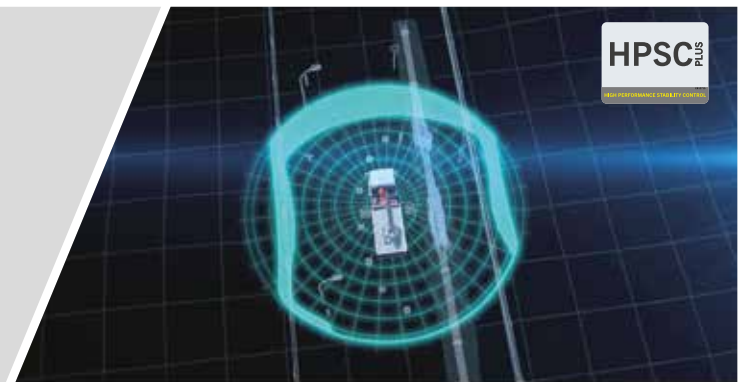
The High Speed Extension speeds up the extension boom system. Crane works faster and more efficiently.



HPSC*

Maximum utilisation of the working range

The variable stabiliser positioning of the High Performance Stability Control System makes it possible to utilise the lifting capacity to the maximum. It enables working within tight spaces.



HPSC-Plus LOAD*

Longer reach due to load detection

HPSC-Plus LOAD is an additional module, extending the stability system HPSC. Thanks to inclination monitoring, lifting capacity can be maximized using the truck's load.



Paltronic*

Comfort and safety

The Paltronic, PALFINGER offers the latest control electronics for the series production crane. The custom designed electronic operates and monitors the crane and offers more efficiency in use and safety.

Radio remote control*

Dialogue with the operator

PALFINGER radio remote controls are equipped with linear lever or cross lever and provide the greatest possible comfort for the operator. All SLD models with LED-Display inform the crane operator about the different operating conditions.



Hose equipment for attachments*

Enhances versatility

The hose equipment offers an easy means of connecting auxiliary equipment. The hose equipment is guided in hose trays for protection.

Lighting package*

More crane safety particularly at dusk and dark

LEDs which backlight the control panel make it easier to read off the crane functions and provide the crane operator with a quick overview of the entire panel during the working process. LED warning lights in the supporting cylinders mean greater safety for crane operator and passers-by.



Control console

All information at a glance

All important information about the crane can be seen on the main control stand. A digital indicator counts and displays the operating hours. Ergonomic control levers and the optional lighting package provide increased safety and comfort even in poor visibility conditions.

Coating technology

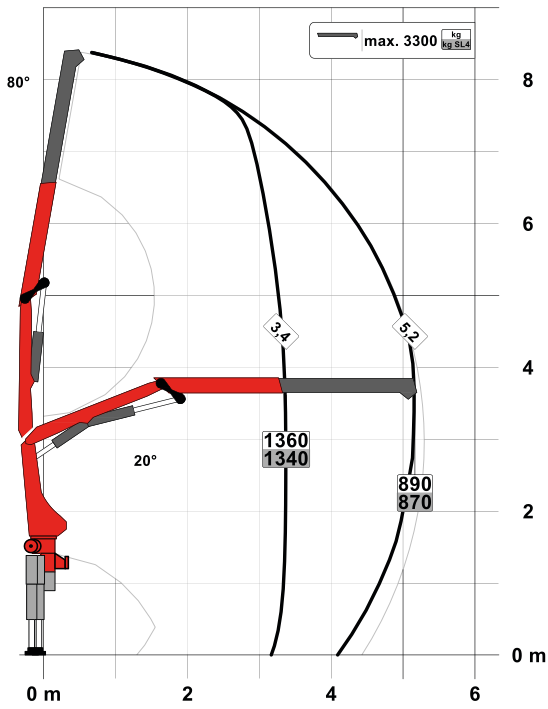
Top quality surface protection at a glance

The KTL coating lays the foundation for a perfect surface protection. Afterwards the components are either coated in the powder-coating facility or are finished with a two-components-topcoat. High value retention and excellent corrosion protection for the whole life of a crane.

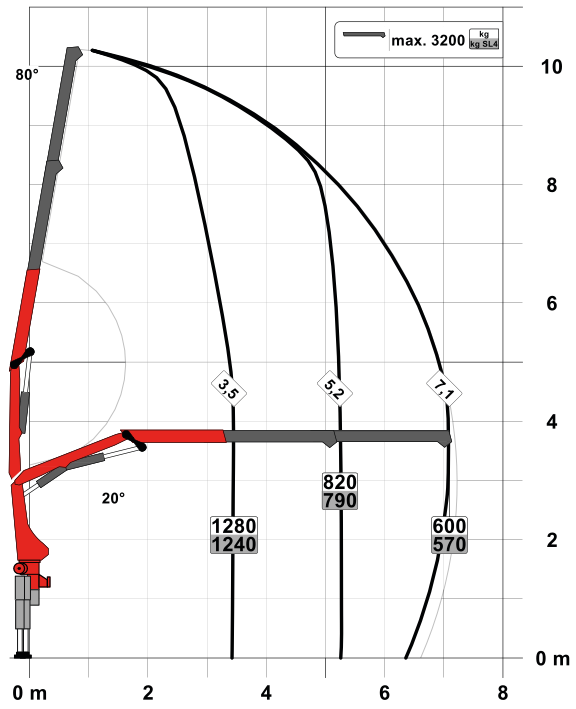
PK 5.001 SLD 1 (NON-CE)

PERFECT DIMENSIONS

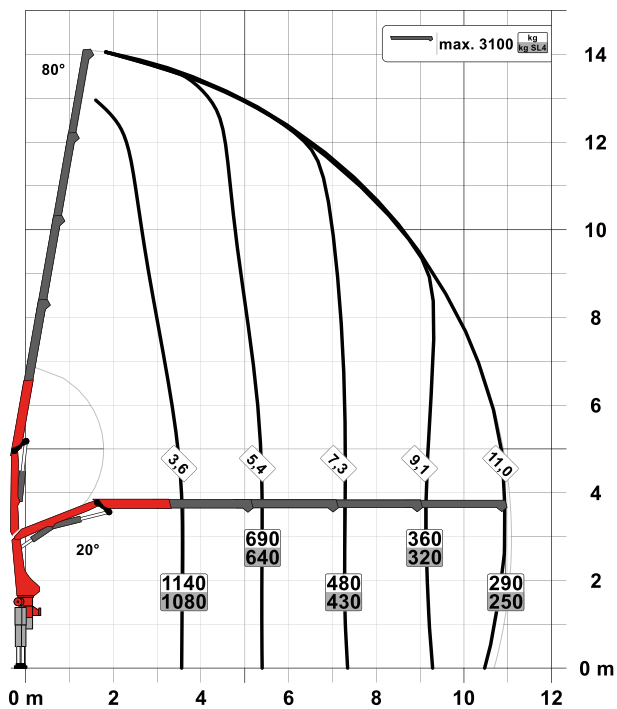
STD

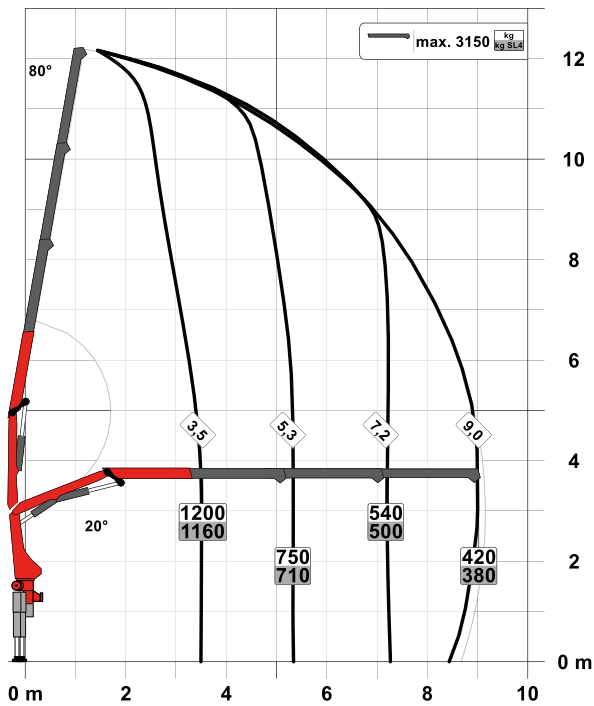


A



C



B

SLD 1 (NON-CE)

- Single Link
- Optional:
 - Overload protection OSK
 - Radio remote control
- NON-CE mode

Technical specifications

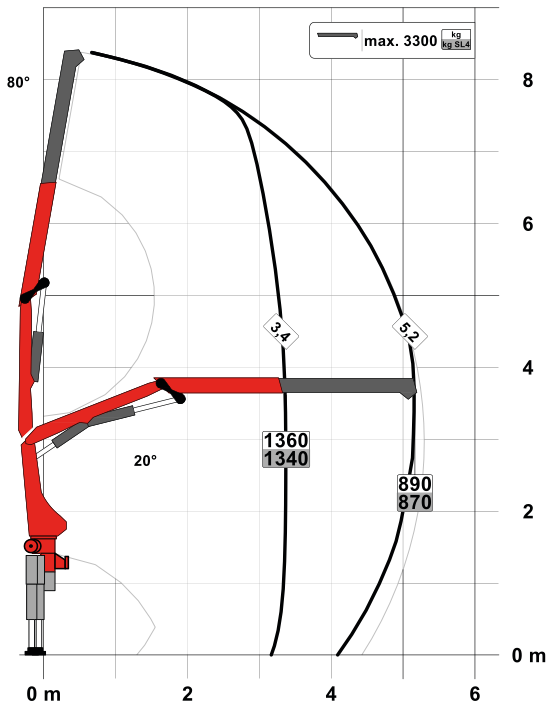
EN 12999 HC1 HD4/S2

Max. lifting moment	4.6 mt/45.0 kNm	33,190 ft.lb
Max. lifting capacity	3300 kg/32.4 kN	7,300 lb
Max. hydraulic outreach	11.1 m	36' 5"
Max. manual outreach	12.7 m	41' 8"
Slewing angle	400°	
Slewing torque	0.6 mt/5.9 kNm	4,350 ft.lb
Stabiliser spread (std./max.)	2.9 m / 5.0 m	9' 6" / 16' 3"
Fitting space required (std.)	0.66 m	2' 2"
Width folded	2.10 m	6' 11"
Max. operating pressure	330 bar	4,785 psi
Recommended pump capacity	from 15 l/min to 25 l/min	4.0 US gpm 6.6 US gpm
Dead weight (std.)	695 kg	1,530 lb

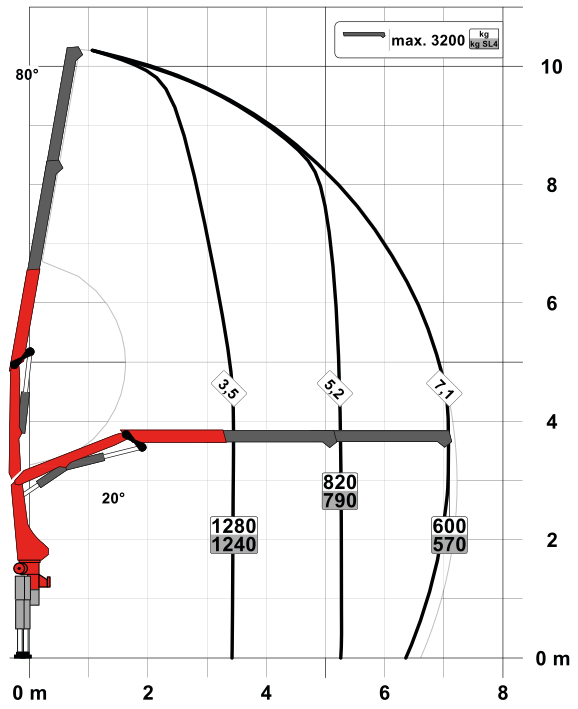
PK 5.001 SLD 3

PERFECT DIMENSIONS

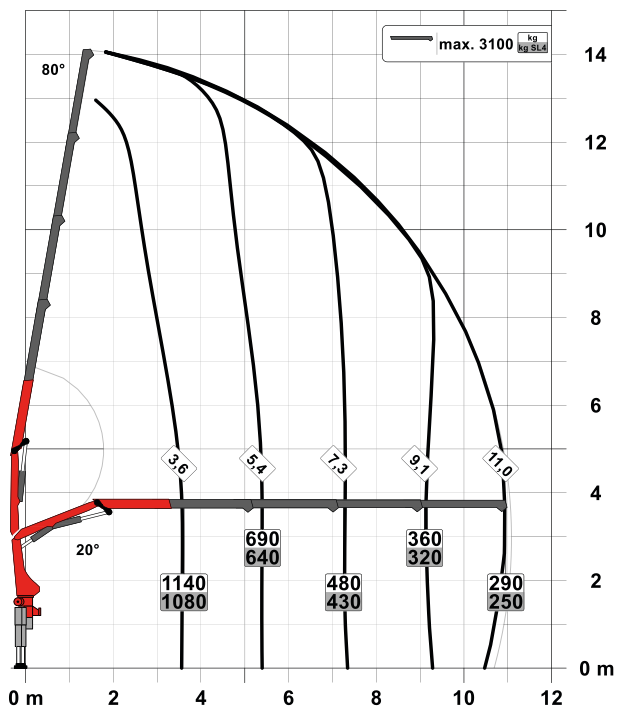
STD

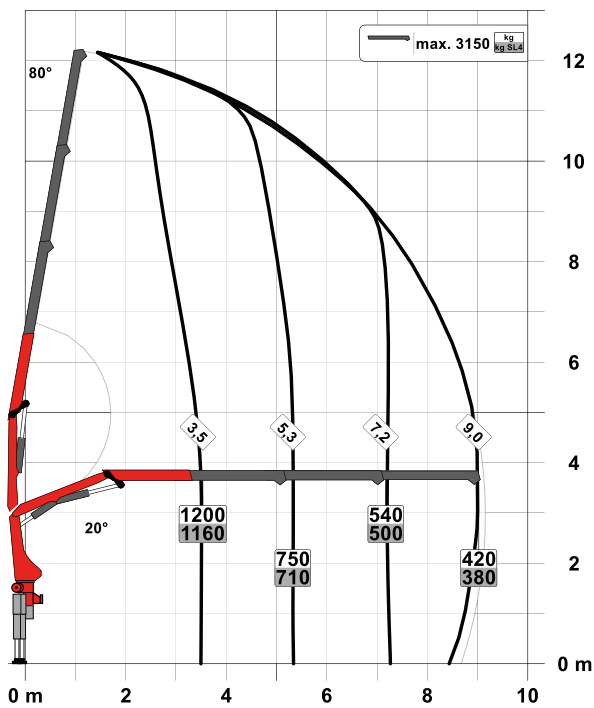


A



C



B

SLD 3

- Single Link
- Paltronic overload protection
- Optional:
 - Stability monitoring system ISC-S (standard for CE), HPSC-L, HPSC-E
 - Radio remote control
- NON-CE and CE model

Technical specifications

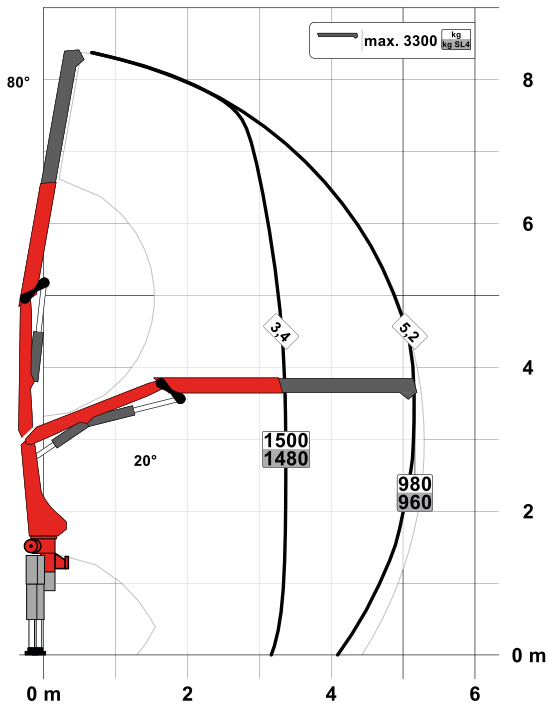
EN 12999 HC1 HD4/S2

Max. lifting moment	4.6 mt/45.0 kNm	33,190 ft.lb
Max. lifting capacity	3300 kg/32.4 kN	7,300 lb
Max. hydraulic outreach	11.1 m	36' 5"
Max. manual outreach	12.7 m	41' 8"
Slewing angle	400°	
Slewing torque	0.6 mt/5.9 kNm	4,350 ft.lb
Stabiliser spread (std./max.)	2.9 m / 5.0 m	9' 6" / 16' 3"
Fitting space required (std.)	0.66 m	2' 2"
Width folded	2.10 m	6' 11"
Max. operating pressure	330 bar	4,785 psi
Recommended pump capacity	from 15 l/min to 25 l/min	4.0 US gpm to 6.6 US gpm
Dead weight (std.)	695 kg	1,530 lb

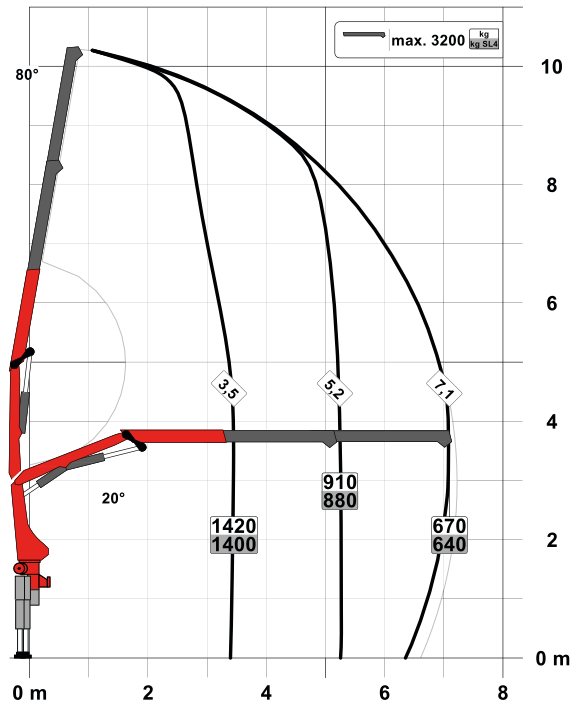
PK 5.501 SLD 5

PERFECT DIMENSIONS

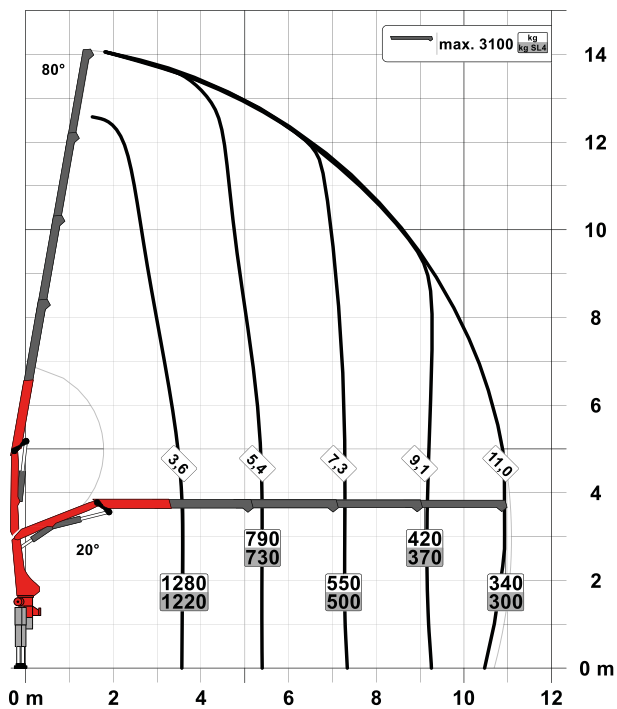
STD

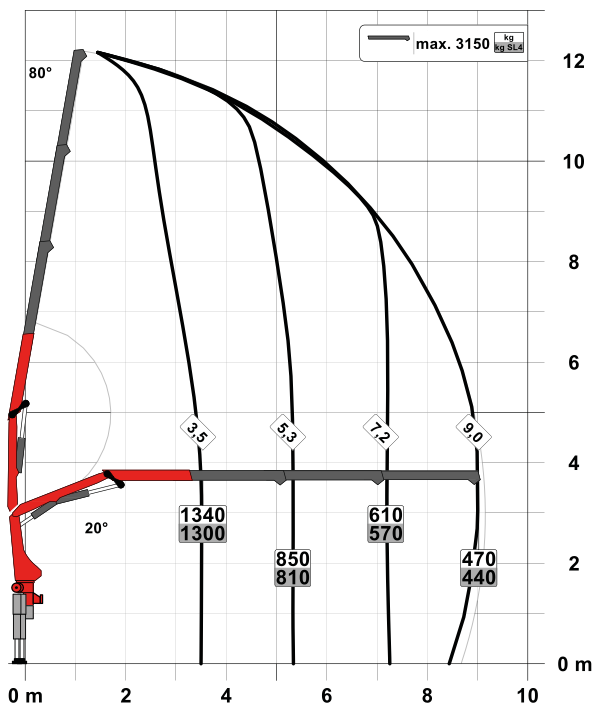


A



C



B

SLD 5

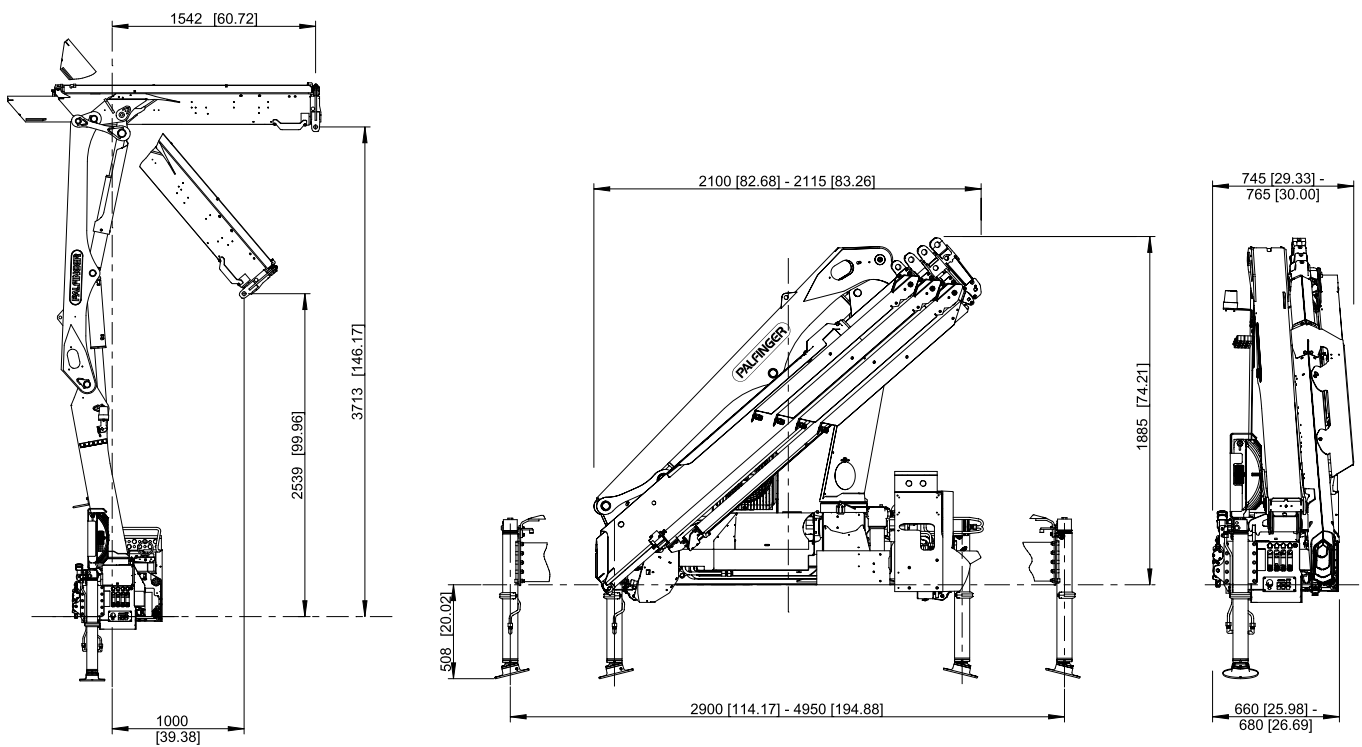
- Single Link
- Paltronic overload protection
- A-HPLS
- Load Sensing valve
- Radio remote control with LED display
- Optional:
 - Stability monitoring system ISC-S (standard for CE), HPSC-L, HPSC-E
- NON-CE and CE model

Technical specifications

EN 12999 HC1 HD4/S2

Max. lifting moment	5.1 mt/49.8 kNm	36,730 ft.lb
Max. lifting capacity	3300 kg/32.4 kN	7,300 lb
Max. hydraulic outreach	11.1 m	36' 5"
Max. manual outreach	12.7 m	41' 8"
Slewing angle	400°	
Slewing torque	0.6 mt/5.9 kNm	4,350 ft.lb
Stabiliser spread (std./max.)	2.9 m / 5.0 m	9' 6" / 16' 3"
Fitting space required (std.)	0.66 m	2' 2"
Width folded	2.10 m	6' 11"
Max. operating pressure	360 bar	5,220 psi
Recommended pump capacity	from 20 l/min to 30 l/min	5.3 US gpm to 7.9 US gpm
Dead weight (std.)	725 kg	1,600 lb

DIMENSIONS



KP-PK5/55SLDM3+EN 01/20

Cranes shown in the leaflet are partially optional equipped and do not always correspond to the standard version. Country-specific regulations must be observed. Dimensions may vary. Subject to technical changes, errors and translation mistakes.

PALFINGER

PK 7.001 SLD 1 | PK 7.001 SLD 3 | PK 7.501 SLD 5

HIGHER PAYLOADS DUE TO INTELLIGENT LIGHTWEIGHT DESIGN

LIFETIME EXCELLENCE



FUNCTIONALITY AND SAFETY REDUCED TO A COMMON DENOMINATOR

- High value retention due to coating technology
- High degree of user-friendliness thanks to optional radio remote control
- Optimised dead weight





ABILITY TO WORK EFFICIENTLY AT THE HIGHEST LEVEL

9 Highlights



Single Link

More power on the hook

The knuckle joint significantly improves the crane's motion geometry.

High Speed Extension

For efficient assignments

The High Speed Extension speeds up the extension boom system. Crane works faster and more efficiently.



Coating technology

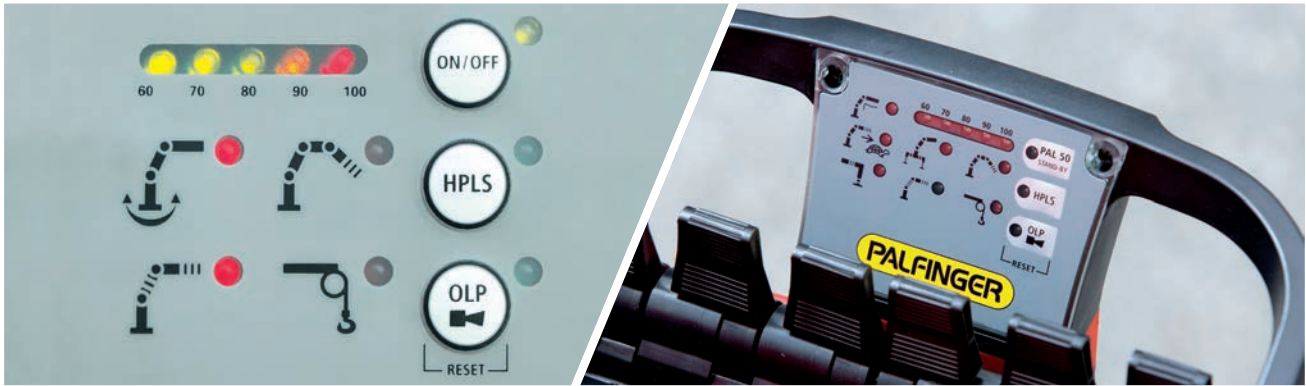
Top quality surface protection at a glance

The KTL coating lays the foundation for a perfect surface protection. Afterwards the components are either coated in the powder-coating facility or are finished with a two-components-topcoat. High value retention and excellent corrosion protection for the whole life of a crane.

HPSC*

Maximum utilisation of the working range

The variable stabiliser positioning of the High Performance Stability Control System allows the full lifting capacity of the crane to be used, even when working within tight spaces.



Paltronic*

Comfort and safety

The PALTRONIC, PALFINGER offers the latest control electronics for the series production crane. The custom designed electronic operates and monitors the crane and offers more efficiency in use and safety.

Radio remote control*

Dialogue with the operator

PALFINGER radio remote controls are equipped with linear lever or cross lever and provide the greatest possible comfort for the operator. All SLD 5 models with LED-Display inform the crane operator about the different operating conditions.



Hose equipment for attachments*

Enhances versatility

The hose equipment offers an easy means of connecting auxiliary equipment. The hose equipment is guided in hose trays for protection.

Lighting package*

More crane safety particularly at dusk and dark

LEDs which backlight the control panel make it easier to read off the crane functions and provide the crane operator with a quick overview of the entire panel during the working process. LED warning lights in the supporting cylinders mean greater safety for crane operator and passers-by.



Control console

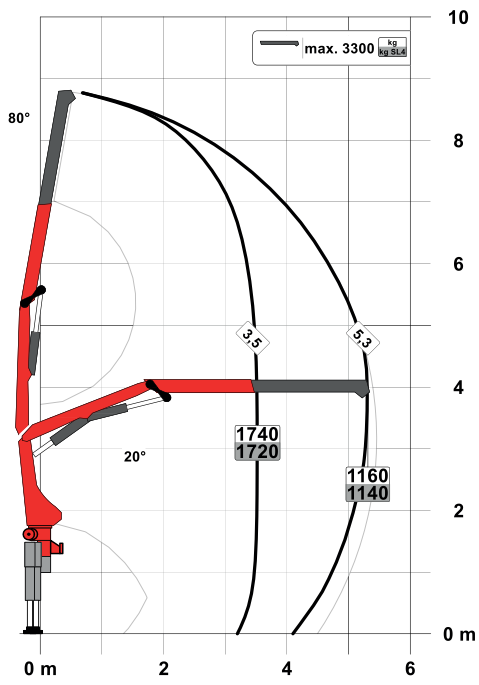
All information at a glance

All important information about the crane can be seen on the main control stand. A digital indicator counts and displays the operating hours. Ergonomic control levers and the optional lighting package provide increased safety and comfort even in poor visibility conditions.

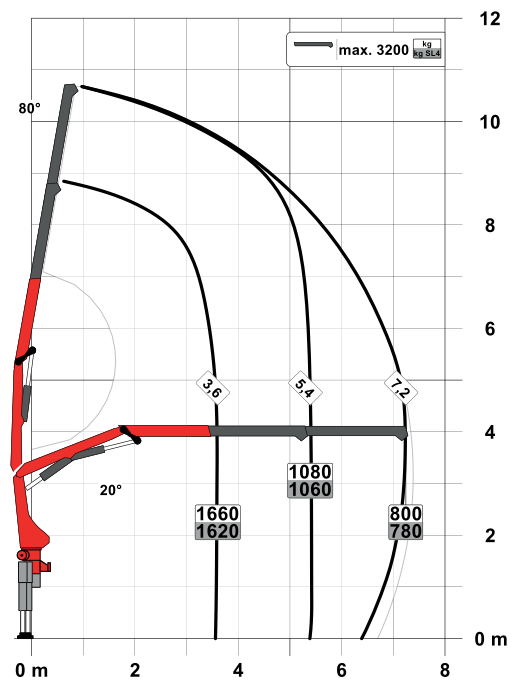
PK 7.001 SLD 1 (NON-CE)

PERFECT DIMENSIONS

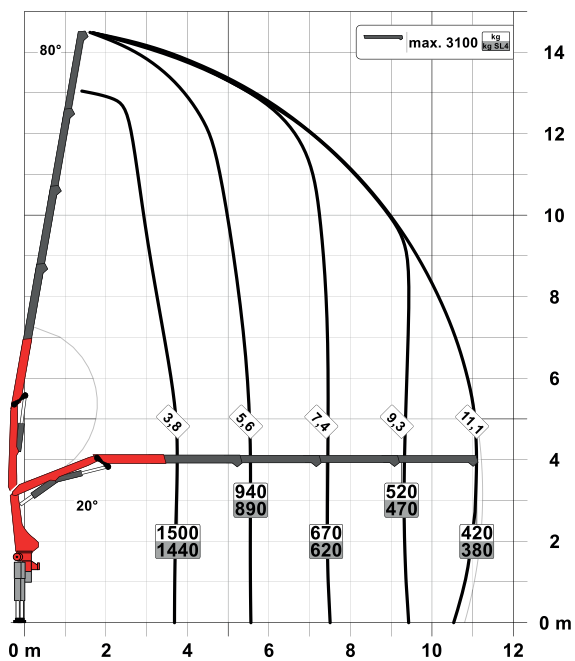
STD

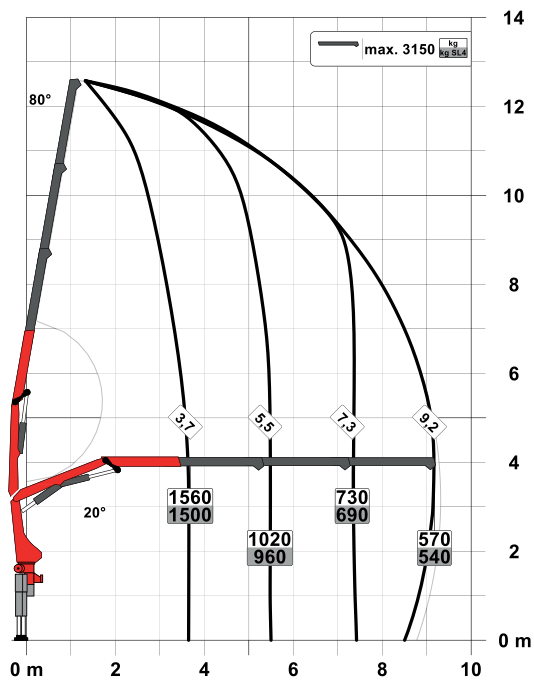


A



C



B

SLD 1 (NON-CE)

- Single Link
- Optional:
 - Overload protection OSK
 - Radio remote control
- NON-CE mode

Technical specifications

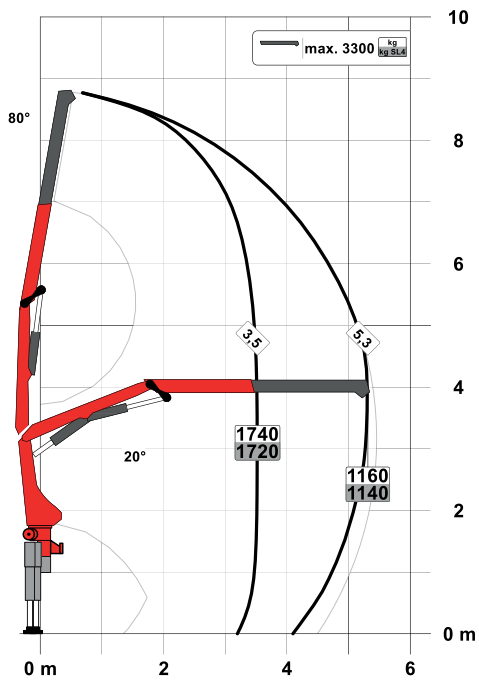
EN 12999 HC1 HD4/S2

Max. lifting moment	6.2 mt/ 60.4 kNm	44530 ft.lb
Max. lifting capacity	3300 kg/ 32.4 kN	7300 lb
Max. hydraulic outreach	11.2 m	36' 9"
Max. manual outreach	12.9 m	41' 12"
Slewing angle	400°	
Slewing torque	0.8 mt/ 7.8 kNm	5750 ft.lb
Stabiliser spread (std./max.)	3.0 m/ 5.0 m	9' 10"/ 16' 3"
Fitting space required (std.)	0.66 m	2' 2"
Width folded	2.2 m	7' 3"
Max. operating pressure	330 bar	4785 psi
Recommended pump capacity	from 20 l/min to 30 l/min	5.3 US gpm 7.9 US gpm
Dead weight (std.)	750 kg	1650 lb

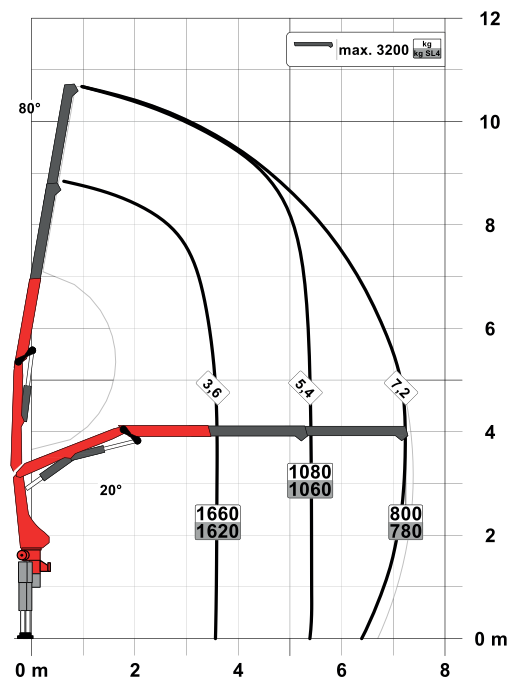
PK 7.001 SLD 3

PERFECT DIMENSIONS

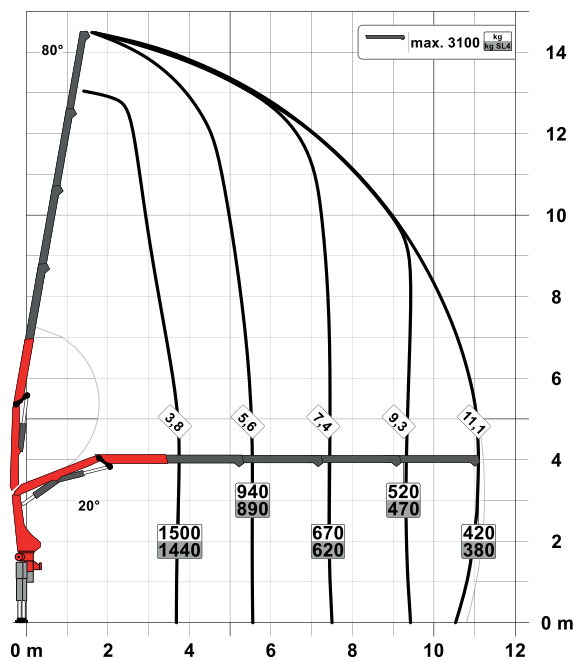
STD

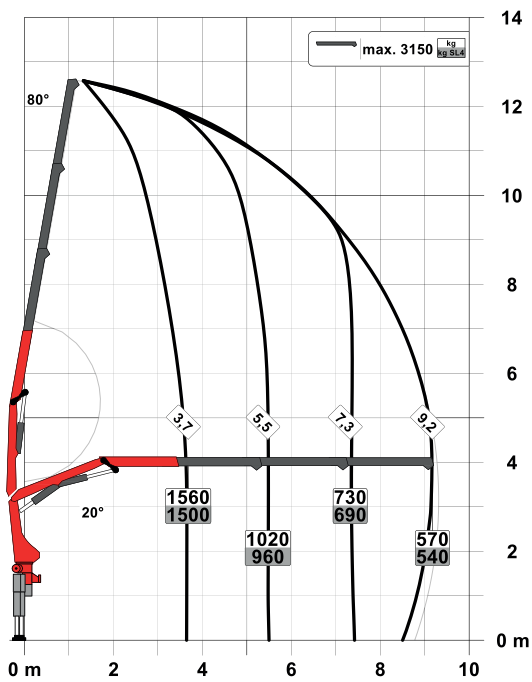


A



C



B

SLD 3

- Single Link
- Paltronic overload protection
- Optional:
 - Stability monitoring system ISC-S (standard for CE), HPSC-L, HPSC-E
 - Radio remote control
- NON-CE and CE model

Technical specifications

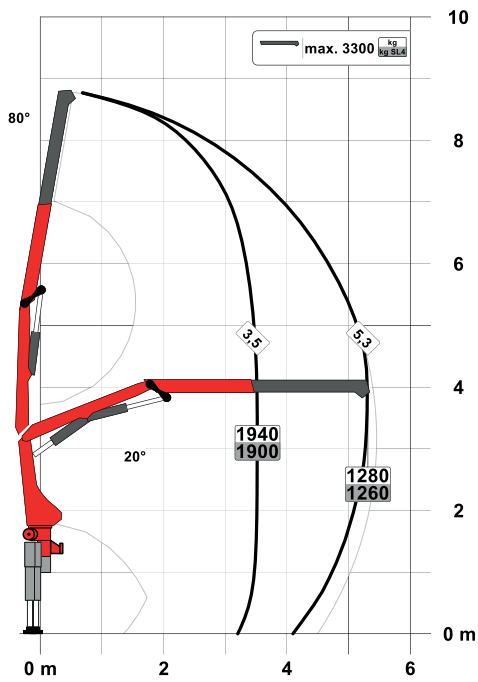
EN 12999 HC1 HD4/S2

Max. lifting moment	6.2 mt/ 60.4 kNm	44530 ft.lb
Max. lifting capacity	3300 kg/ 32.4 kN	7300 lb
Max. hydraulic outreach	11.2 m	36' 9"
Max. manual outreach	12.9 m	41' 12"
Slewing angle	400°	
Slewing torque	0.8 mt/ 7.8 kNm	5750 ft.lb
Stabiliser spread (std./max.)	3.0 m/ 5.0 m	9' 10"/ 16' 3"
Fitting space required (std.)	0.66 m	2' 2"
Width folded	2.2 m	7' 3"
Max. operating pressure	330 bar	4785 psi
Recommended pump capacity	from 20 l/min to 30 l/min	5.3 US gpm to 7.9 US gpm
Dead weight (std.)	750 kg	1650 lb

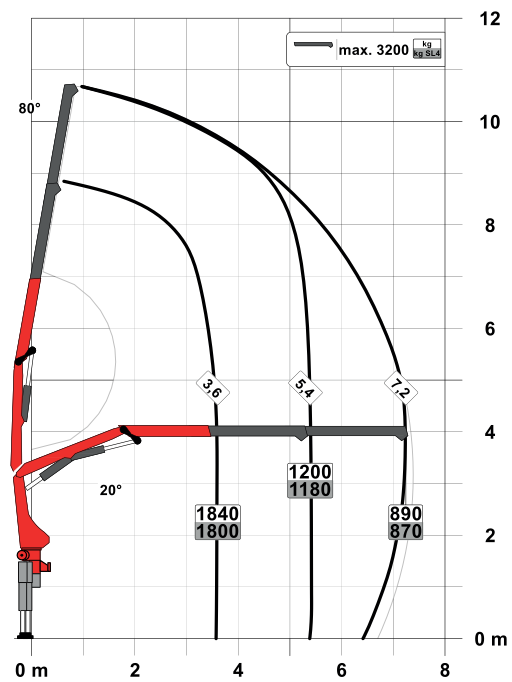
PK 7.501 SLD 5

PERFECT DIMENSIONS

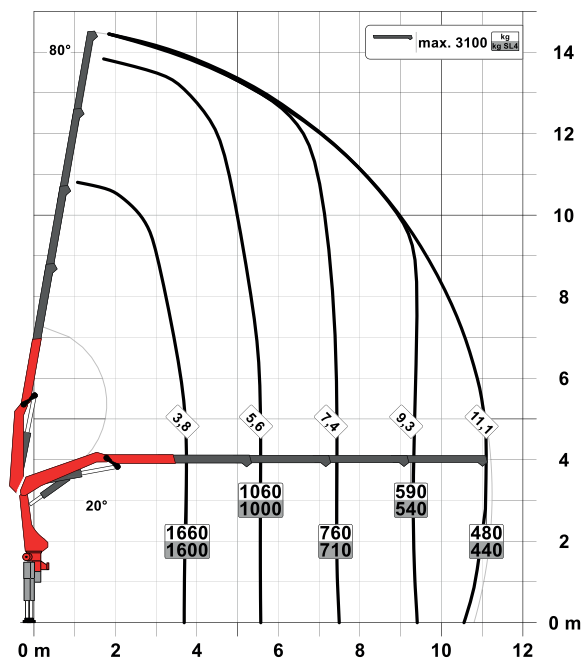
STD

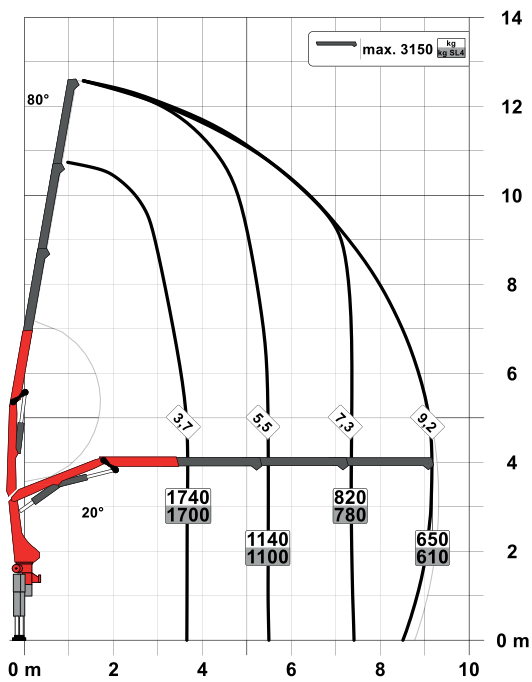


A



C



B

SLD 5

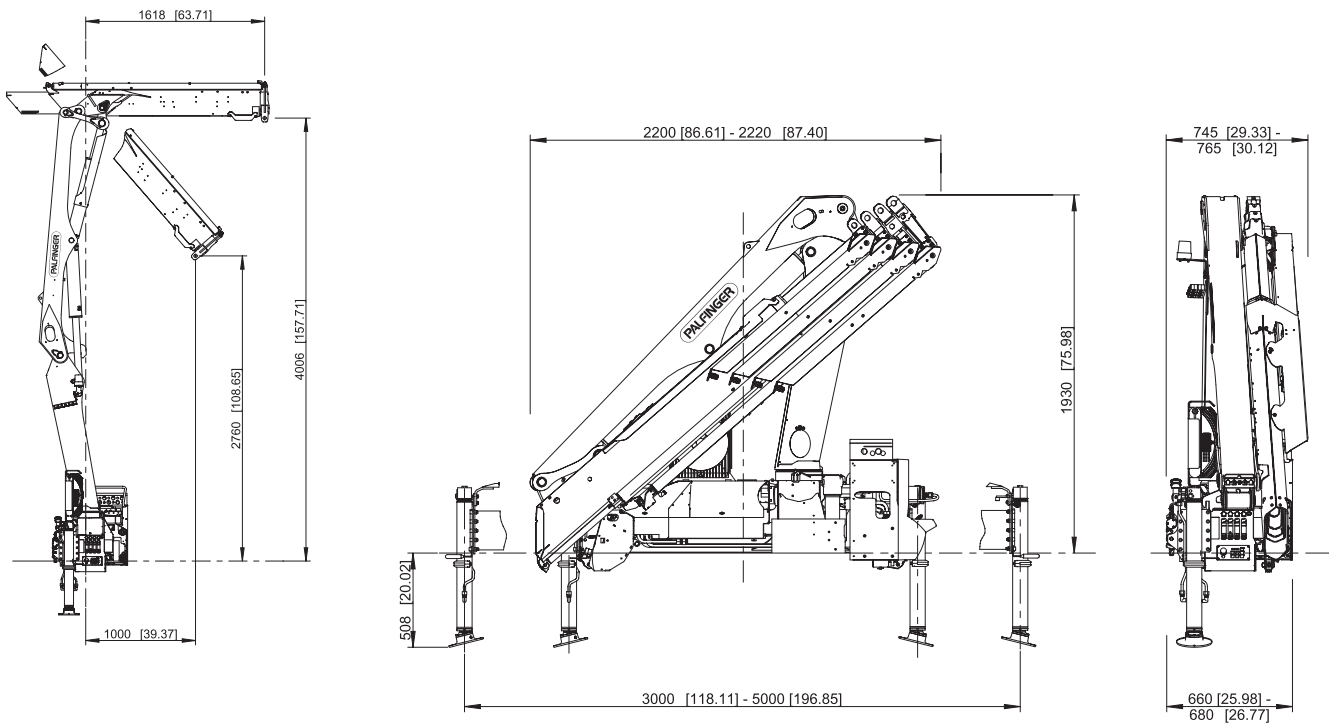
- Single Link
- Paltronic overload protection
- E-HPLS
- Load Sensing valve
- Radio remote control with LED display
- Optional:
 - Stability monitoring system ISC-S (standard for CE), HPSC-L, HPSC-E
- NON-CE and CE model

Technical specifications

EN 12999 HC1 HD4/S2

Max. lifting moment	6.8 mt/ 66.9 kNm	49340 ft.lb
Max. lifting capacity	3300 kg/ 32,4 kN	7300 lb
Max. hydraulic outreach	11.2 m	36' 9"
Max. manual outreach	12.9 m	41' 12"
Slewing angle	400°	
Slewing torque	0.8 mt/ 7.8 kNm	5750 ft.lb
Stabiliser spread (std./max.)	3.0 m/ 5.0 m	9' 10"/ 16' 3"
Fitting space required (std.)	0.66 m	2' 2"
Width folded	2.2 m	7' 3"
Max. operating pressure	360 bar	5220 psi
Recommended pump capacity	from 30 l/min to 40 l/min	7.9 US gpm to 10.6 US gpm
Dead weight (std.)	780 kg	1720 lb

DIMENSIONS



KP-PK7/75SLDM2+EN

Cranes shown in the leaflet are partially optional equipped and do not always correspond to the standard version. Country-specific regulations must be observed. Dimensions may vary. Subject to technical changes, errors and translation mistakes.

**PK 8.501 SLD 1 | PK 9.001 SLD 3
PK 8.501 SLD 3 | PK 9.501 SLD 5**

**LIGHTWEIGHT DESIGN
OFFERS AN OPTIMIZED
MOUNTING CONCEPT**

LIFETIME EXCELLENCE



UNBEATABLE POWER-TO-WEIGHT-RATIO

- High operator friendliness thanks to optional radio remote control
- Maximum utilisation of the working range due to HPSC
- More lifting power due to A-HPLS
- High value retention due to KTL-coating combined with powder coating or two component finish coat paint
- Higher payloads due to intelligent lightweight design





PERFECT TOOL WITH SOPHISTICATED KINEMATICS

10 Highlights



Single Link

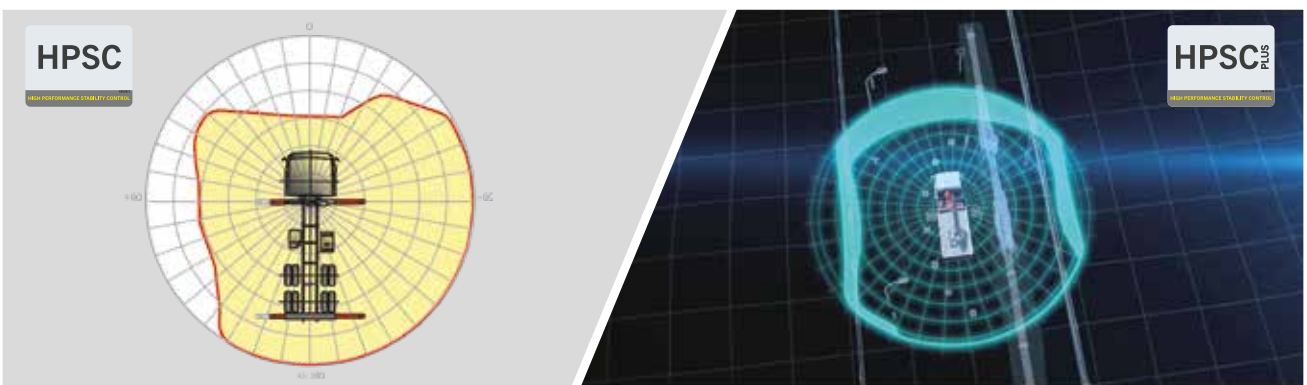
More power on the hook

The linkage system improves the crane's motion geometry significantly.

High Speed Extension

For efficient assignments

The High Speed Extension speeds up the extension boom system. Crane works faster and more efficiently.



HPSC*

Maximum utilisation of the working range

The variable stabiliser positioning of the High Performance Stability Control System makes it possible to utilise the lifting capacity to the maximum. It enables working within tight spaces.

HPSC-Plus LOAD*

Longer reach due to load detection

HPSC-Plus LOAD is an additional module, extending the stability system HPSC. Thanks to inclination monitoring, lifting capacity can be maximized using the truck's load.



Paltronic*

Comfort and safety

The Paltronic, PALFINGER offers the latest control electronics for the series production crane. The custom designed electronic operates and monitors the crane and offers more efficiency in use and safety.

Radio remote control*

Dialogue with the operator

PALFINGER radio remote controls are equipped with linear lever or cross lever and provide the greatest possible comfort for the operator. All SLD models with LED-Display inform the crane operator about the different operating conditions.



Hose equipment for attachments*

Versatile and user-friendly

The hose equipment offers an easy means of connecting auxiliary equipment. The hose equipment is guided in hose trays for protection

Lighting package*

More crane safety particularly at dusk and dark

LEDs which backlight the control panel make it easier to read off the crane functions and provide the crane operator with a quick overview of the entire panel during the working process. LED warning lights in the supporting cylinders mean greater safety for crane operator and passers-by.



Control console

All information at a glance

All important information about the crane can be seen on the main control stand. A digital indicator counts and displays the operating hours. Ergonomic control levers and the optional lighting package provide increased safety and comfort even in poor visibility conditions.

Coating technology

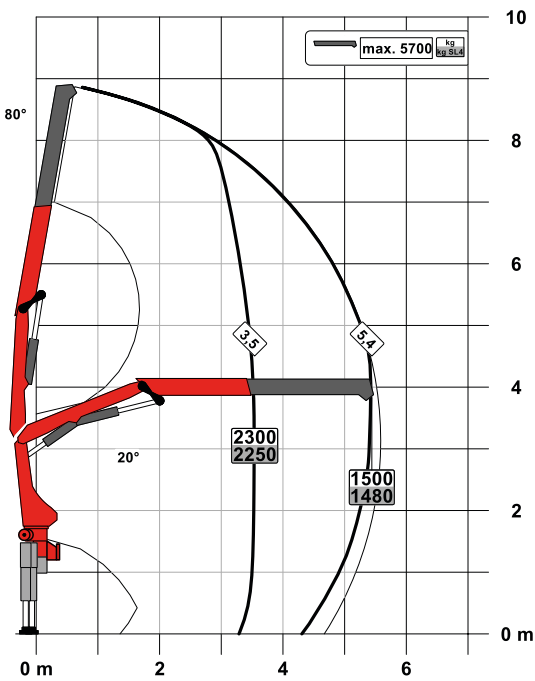
Top quality surface protection at a glance

The KTL coating lays the foundation for a perfect surface protection. Afterwards the components are either coated in the powder-coating facility or are finished with a two-components-top-coat. High value retention and excellent corrosion protection for the whole life of a crane.

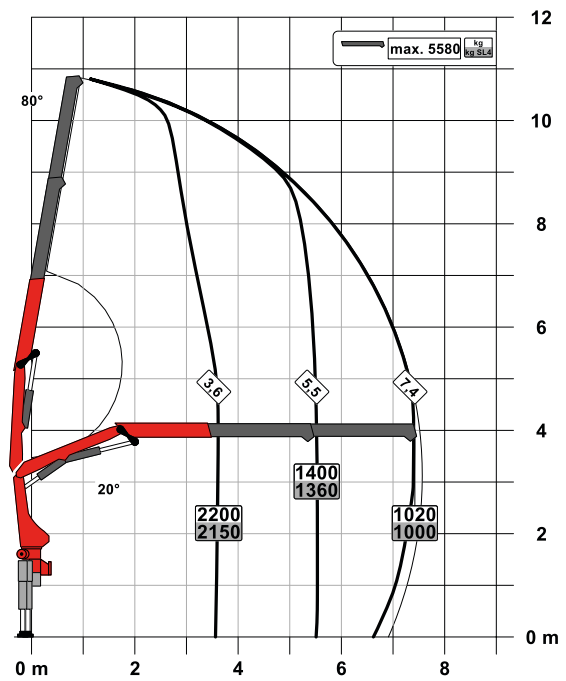
PK 8.501 SLD 1 (NON-CE)

LIFTING CAPACITY DIAGRAMS

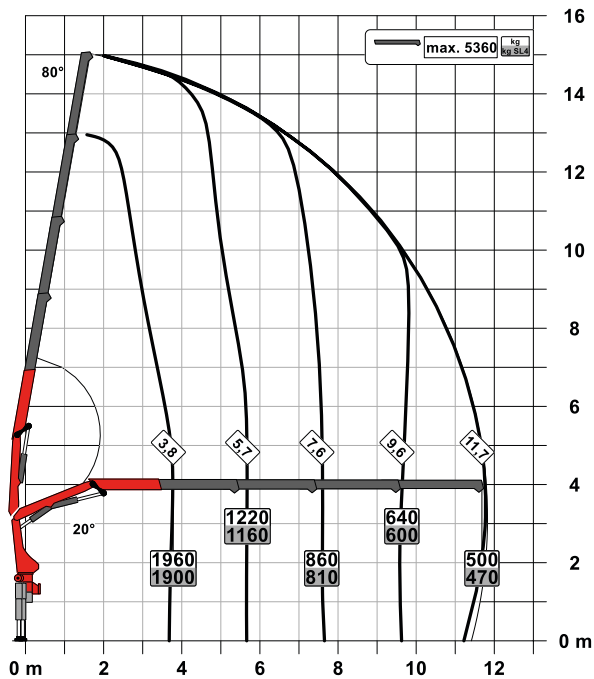
STD

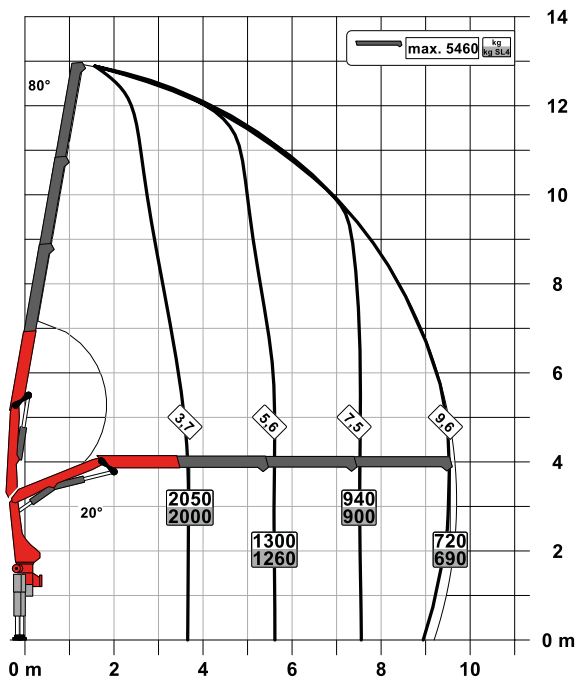


A



C



B

MODEL LINE SLD 1 (NON-CE)

- Single Link
- Optional:
 - Overload protection OSK
 - Top seat control
 - High stand control
 - Radio remote control
- NON-CE model

TECHNICAL SPECIFICATIONS

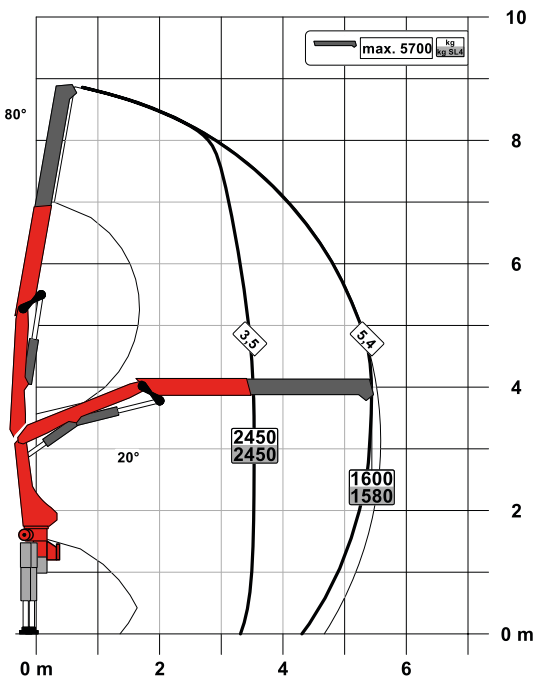
EN 12999 HC1 HD4/S2

Max. lifting moment	8.1 mt/79.6 kNm	58710 ft.lb
Max. lifting capacity	5700 kg/55.9 kN	12570 lb
Max. hydraulic outreach	11.8 m	38' 9"
Max. manual outreach	15.8 m	51' 10"
Slewing angle	400°	
Slewing torque	1.0 mt/9.8 kNm	7230 ft.lb
Stabiliser spread (std./max.)	3.2 m/ 5.6 m	10' 6"/ 18' 4"
Fitting space required (std.)	0.72 m	2' 4"
Width folded	2.32 m	7' 7"
Max. operating pressure	330 bar	4785 psi
Recommended pump capacity	from 25 l/min to 35 l/min	6.6 US gpm 9.2 US gpm
Dead weight (std.)	1050 kg	2320 lb

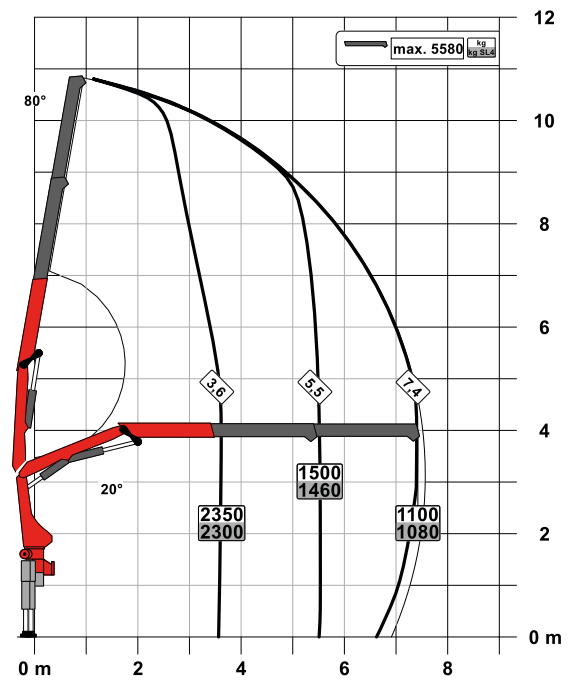
PK 9.001 SLD 3 (NON-CE)

LIFTING CAPACITY DIAGRAMS

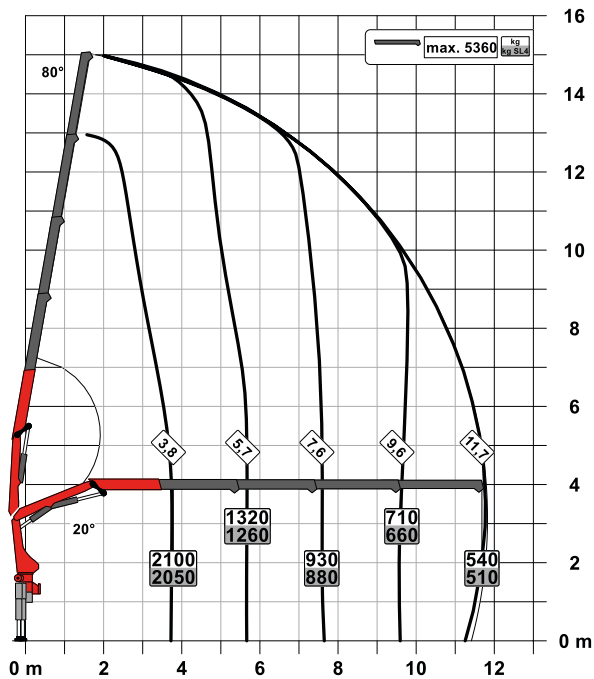
STD

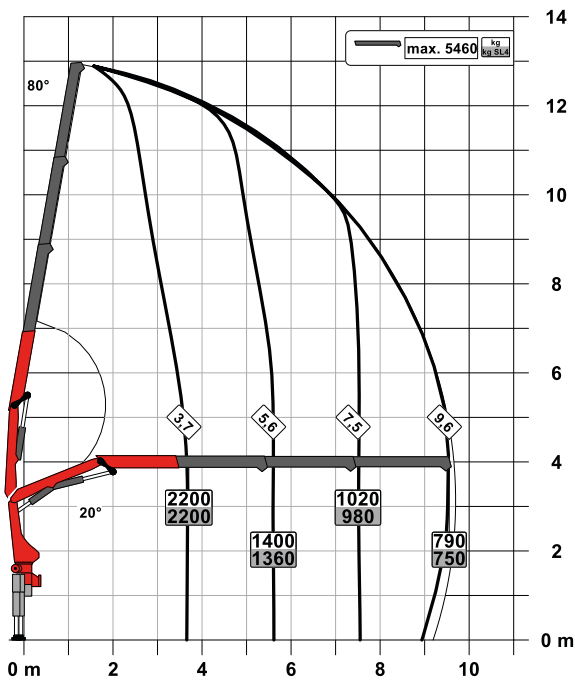


A



C



B

MODEL LINE SLD 3 (NON-CE)

- Single Link
- M-HPLS
- Paltronic overload protection
- NON-CE model

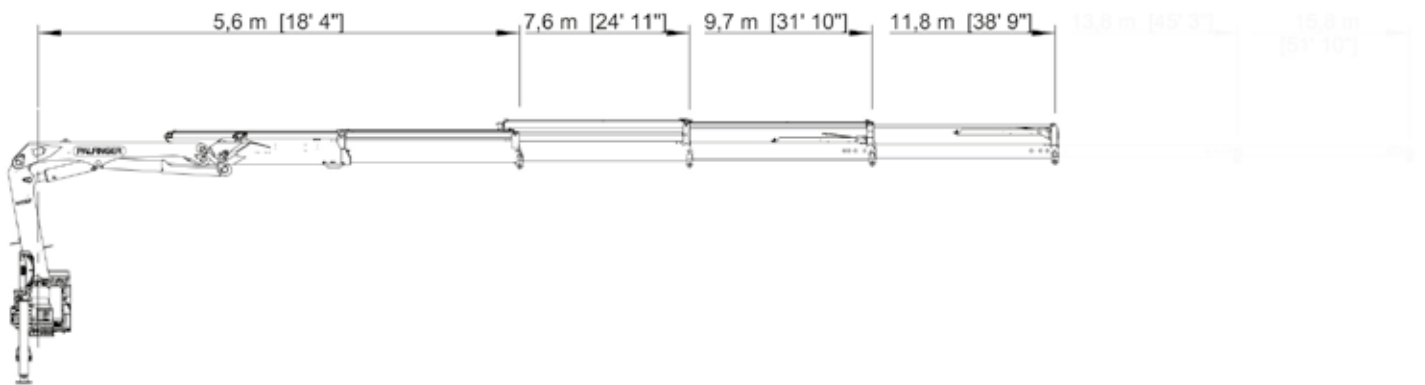
TECHNICAL SPECIFICATIONS

EN 12999 HC1 HD4/S2

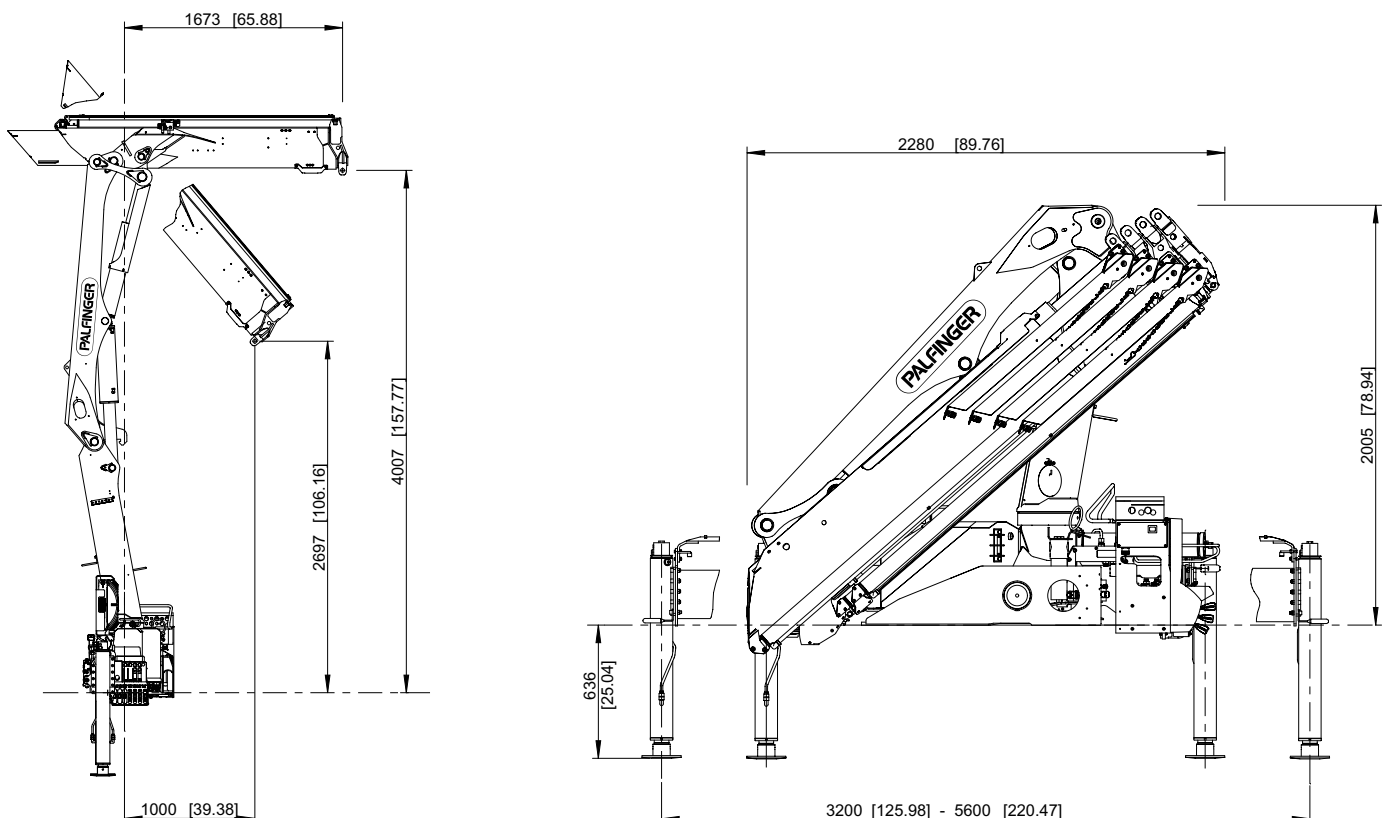
Max. lifting moment	8.7 mt/85.3 kNm	62910 ft.lb
Max. lifting capacity	5700 kg/55.9 kN	12570 lb
Max. hydraulic outreach	11.8 m	38' 9"
Max. manual outreach	15.8 m	51' 10"
Slewing angle	400°	
Slewing torque	1.0 mt/9.8 kNm	7230 ft.lb
Stabiliser spread (std./max.)	3.2 m/ 5.6 m	10' 6"/ 18' 4"
Fitting space required (std.)	0.72 m	2' 4"
Width folded	2.32 m	7' 7"
Max. operating pressure	350 bar	5075 psi
Recommended pump capacity	from 25 l/min to 35 l/min	6.6 US gpm 9.2 US gpm
Dead weight (std.)	1050 kg	2320 lb

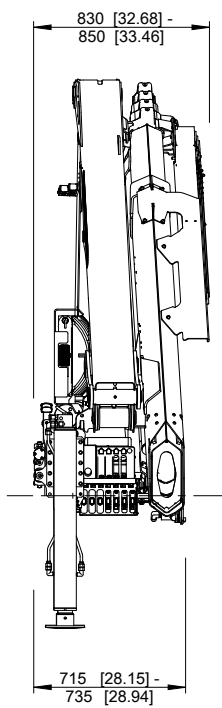
PERFECT DIMENSIONS

EXTENSION BOOM VARIANTS STANDARD – C



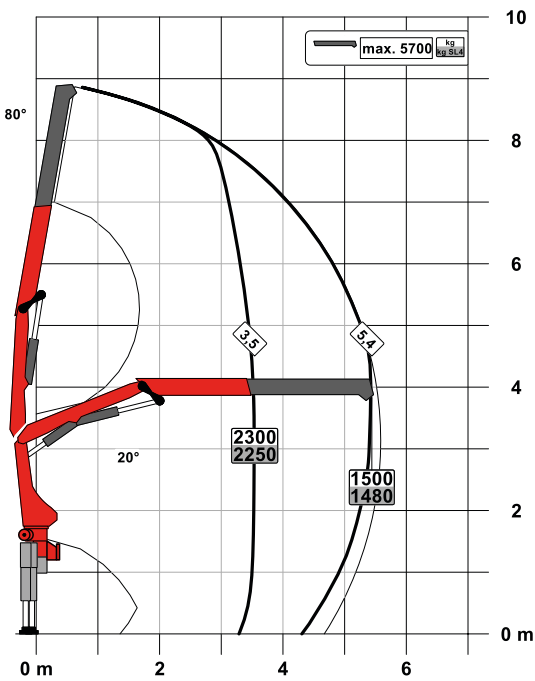
WORKING POSITION, TRANSPORT POSITION



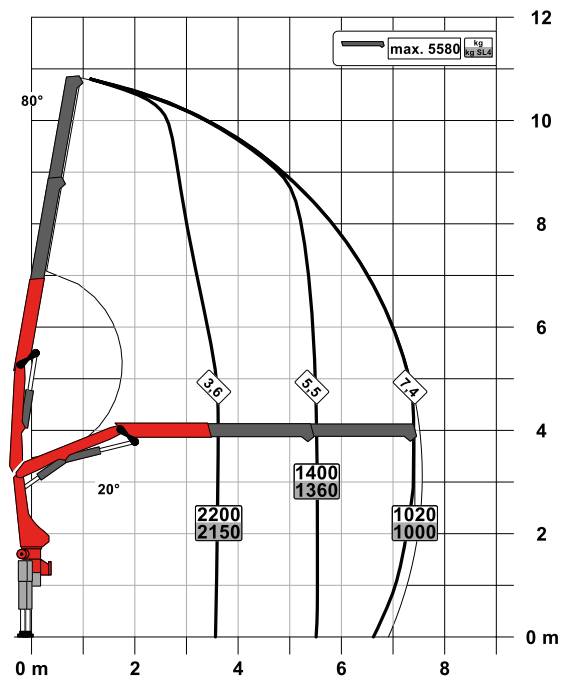


LIFTING CAPACITY DIAGRAMS

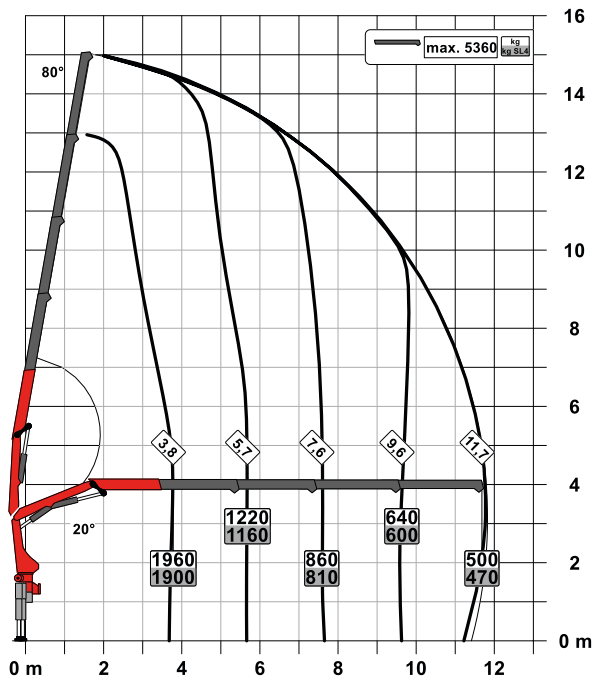
STD

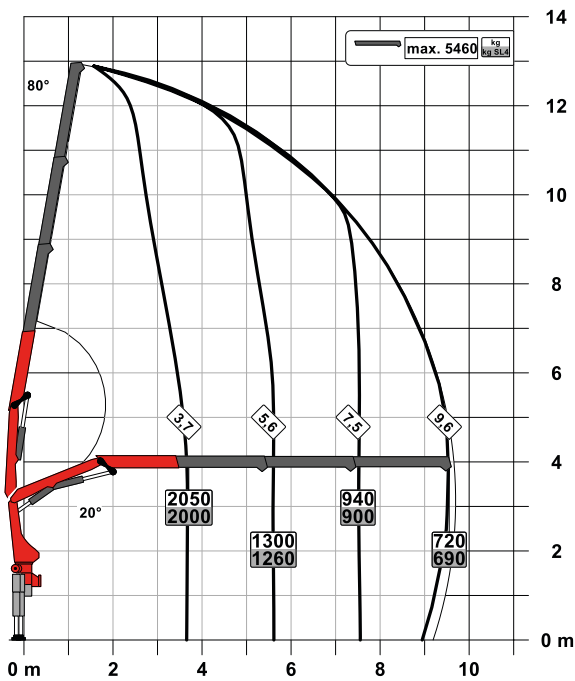


A



C



B

MODEL LINE SLD 3

- Single Link
- Paltronic overload protection
- Optional:
 - Stability monitoring system ISC-S (standard for CE), HPSC-L, HPSC-E
 - High stand control
 - Radio remote control
 - Rope winch 1.5t on the knuckle boom
- NON-CE and CE model

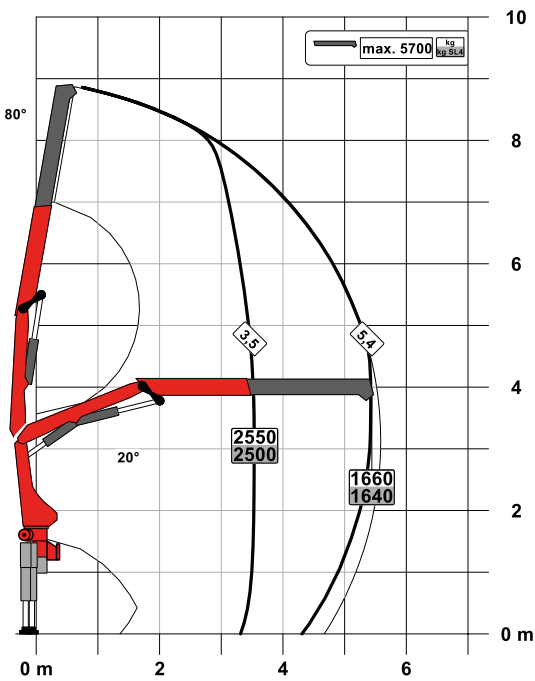
TECHNICAL SPECIFICATIONS

EN 12999 HC1 HD4/S2

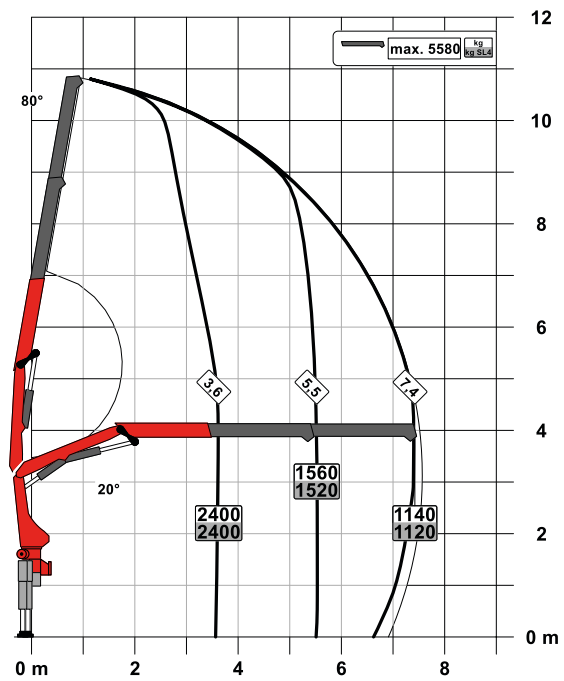
Max. lifting moment	8.1 mt/79.6 kNm	58710 ft.lb
Max. lifting capacity	5700 kg/55.9 kN	12570 lb
Max. hydraulic outreach	11.8 m	38' 9"
Max. manual outreach	15.8 m	51' 10"
Slewing angle	400°	
Slewing torque	1.0 mt/9.8 kNm	7230 ft.lb
Stabiliser spread (std./max.)	3.2 m/ 5.6 m	10' 6"/ 18' 4"
Fitting space required (std.)	0.72 m	2' 4"
Width folded	2.32 m	7' 7"
Max. operating pressure	330 bar	4785 psi
Recommended pump capacity	from 25 l/min to 35 l/min	6.6 US gpm to 9.2 US gpm
Dead weight (std.)	1050 kg	2320 lb

LIFTING CAPACITY DIAGRAMS

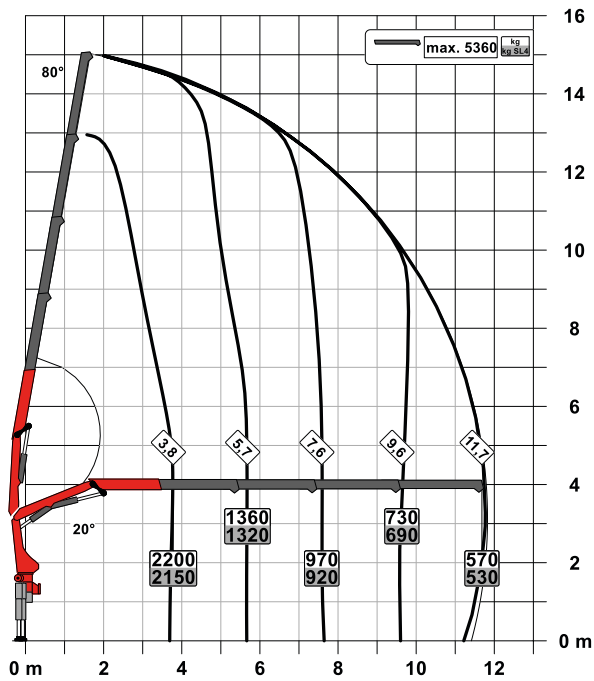
STD

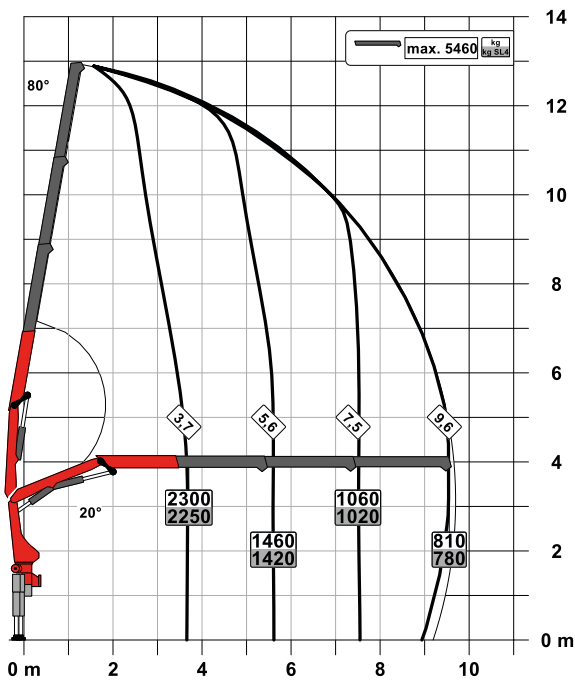


A



C



B

MODEL LINE SLD 5

- Single Link
- Paltronic overload protection
- A-HPLS
- Load Sensing valve
- Radio remote control with LED display
- Optional:
 - Stability monitoring system ISC-S (standard for CE), HPSC-L, HPSC-E
 - Rope winch 1.5t on the knuckle boom
- NON-CE and CE model

TECHNICAL SPECIFICATIONS

EN 12999 HC1 HD4/S2

Max. lifting moment	9.0 mt/88.2 kNm	65050 ft.lb
Max. lifting capacity	5700 kg/55.9 kN	12570 lb
Max. hydraulic outreach	11.8 m	38' 9"
Max. manual outreach	15.8 m	51' 10"
Slewing angle	400°	
Slewing torque	1.0 mt/9.8 kNm	7230 ft.lb
Stabiliser spread (std./max.)	3.2 m/ 5.6 m	10' 6"/ 18' 4"
Fitting space required (std.)	0.72 m	2' 4"
Width folded	2.32 m	7' 7"
Max. operating pressure	360 bar	5220 psi
Recommended pump capacity	from 40 l/min to 50 l/min	10.6 US gpm to 13.2 US gpm
Dead weight (std.)	1080 kg	2380 lb

KP-PK8/9SLDM3+EN

Cranes shown in the leaflet are partially optional equipped and do not always correspond to the standard version. Country-specific regulations must be observed. Dimensions may vary. Subject to technical changes, errors and translation mistakes.

**PK 11.001 SLD 1 | PK 12.001 SLD 3
PK 11.001 SLD 3 | PK 12.501 SLD 5**

SINGLE LINK AND PERFECT POWER TO WEIGHT RATIO OFFER EFFICIENT LOAD HANDLING

LIFETIME EXCELLENCE



UNBEATABLE POWER-TO-WEIGHT-RATIO

- More lifting capacity thanks to E-HPLS
- High value retention due to coating technology
- Practical and attractive due to Functional Design
- Maximum reliability with PALTRONIC
- Higher payloads due to intelligent lightweight design





PERFECT TOOL WITH SOPHISTICATED KINEMATICS

9 Highlights



Knuckle joint on knuckle boom

More power on the hook

The knuckle joint significantly improves the crane's motion geometry.

High Speed Extension

For efficient assignments

The High Speed Extension speeds up the extension boom system. Crane works faster and more efficiently.



Coating technology

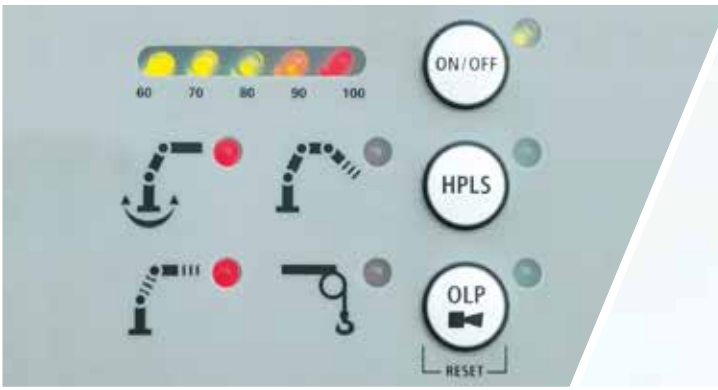
Top quality surface protection at a glance

The KTL coating lays the foundation for a perfect surface protection. Afterwards the components are either coated in the powder-coating facility or are finished with a two-components-topcoat. High value retention and excellent corrosion protection for the whole life of a crane.

HPSC*

Maximum utilisation of the working range

The variable stabiliser positioning of the High Performance Stability Control System allows the full lifting capacity of the crane to be used, even when working within tight spaces.



Paltronic*

Comfort and safety

The PALTRONIC, PALFINGER offers the latest control electronics for the series production crane. The custom designed electronic operates and monitors the crane and offers more efficiency in use and safety.



Radio remote control*

Dialogue with the operator

PALFINGER radio remote controls are equipped with linear lever or cross lever and provide the greatest possible comfort for the operator. All SLD 5 models with LED-Display inform the crane operator about the different operating conditions.



Hose equipment for attachments*

Enhances versatility

The hose equipment offers an easy means of connecting auxiliary equipment. The hose equipment is guided in hose trays for protection.



Lighting package*

More crane safety particularly at dusk and dark

LEDs which backlight the control panel make it easier to read off the crane functions and provide the crane operator with a quick overview of the entire panel during the working process. LED warning lights in the supporting cylinders mean greater safety for crane operator and passers-by.



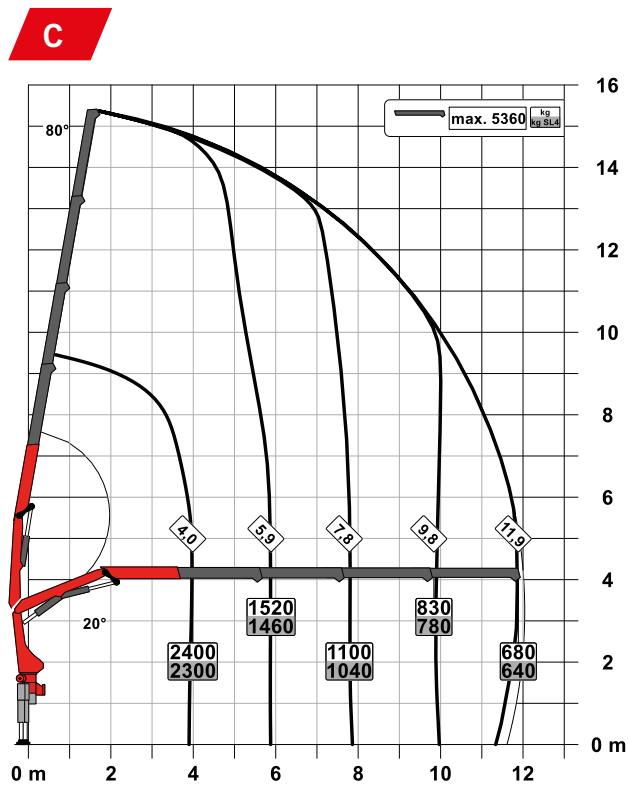
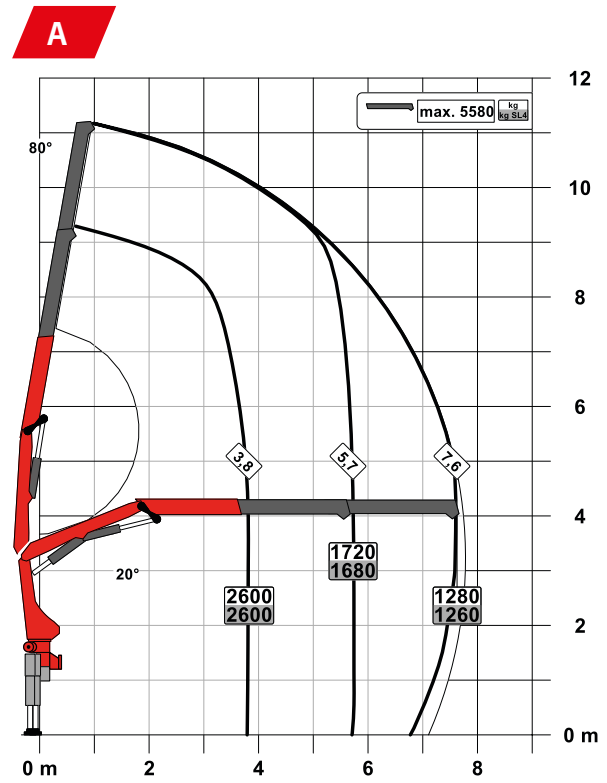
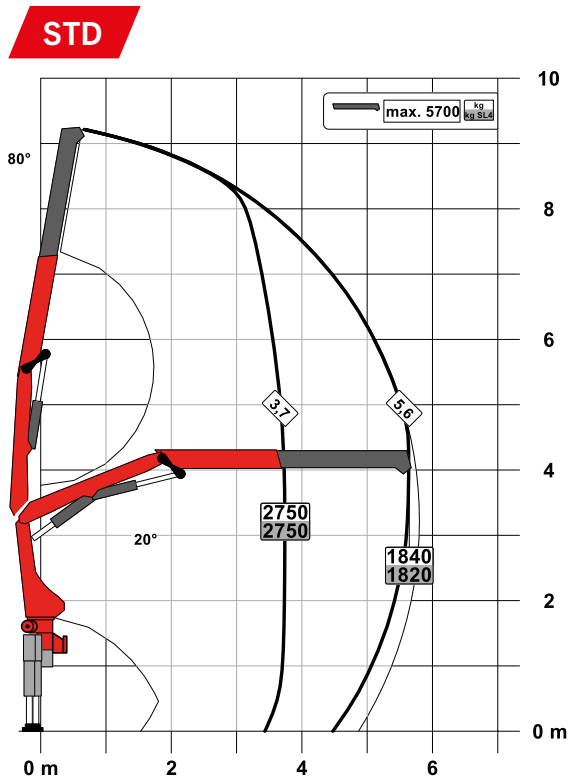
Control console

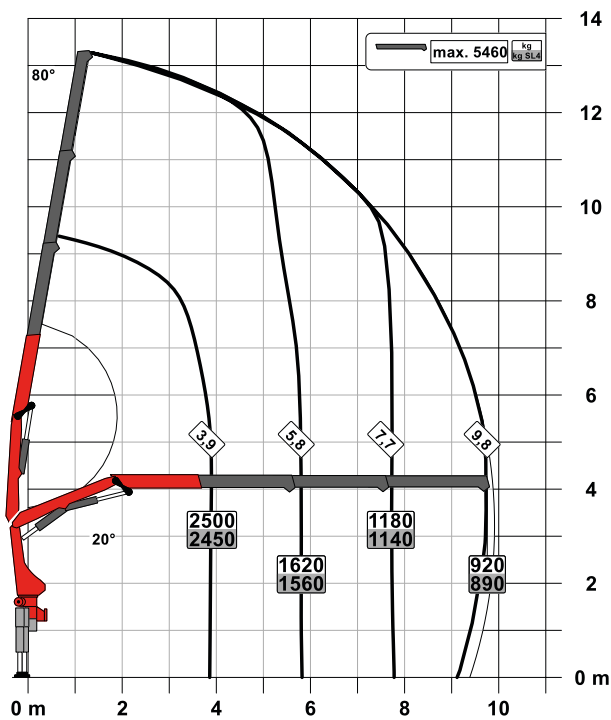
All information at a glance

All important information about the crane can be seen on the main control stand. A digital indicator counts and displays the operating hours. Ergonomic control levers and the optional lighting package provide increased safety and comfort even in poor visibility conditions.

PK 11.001 SLD 1 (NON-CE)

PERFECT DIMENSIONS



B

SLD 1 (NON-CE)

- Single Link
- Optional:
 - Overload protection OSK
 - Top seat control
 - High stand control
 - Radio remote control
- NON-CE model

Technical specifications

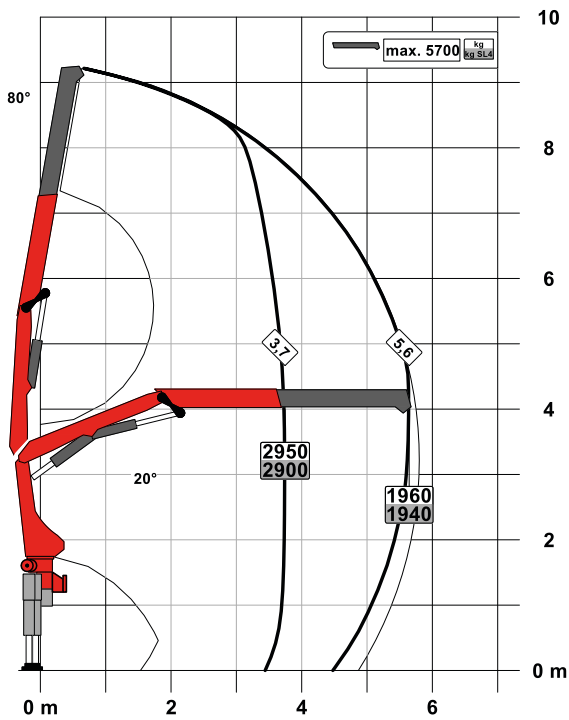
EN 12999 HC1 HD4/S2

Max. lifting moment	10.3 mt/101.4 kNm	74740 ft.lb
Max. lifting capacity	5700 kg/55.9 kN	12570 lb
Max. hydraulic outreach	12.0 m	39' 6"
Max. manual outreach	15.9 m	52' 2"
Slewing angle	400°	
Slewing torque	1.3 mt/12.7 kNm	9370 ft.lb
Stabiliser spread (std./max.)	3.3 m/ 5.6 m	10' 10"/ 18' 4"
Fitting space required (std.)	0.72 m	2' 4"
Width folded	2.32 m	7' 7"
Max. operating pressure	330 bar	4785 psi
Recommended pump capacity	from 30 l/min to 45 l/min	7.9 US gpm 11.9 US gpm
Dead weight (std.)	1140 kg	2510 lb

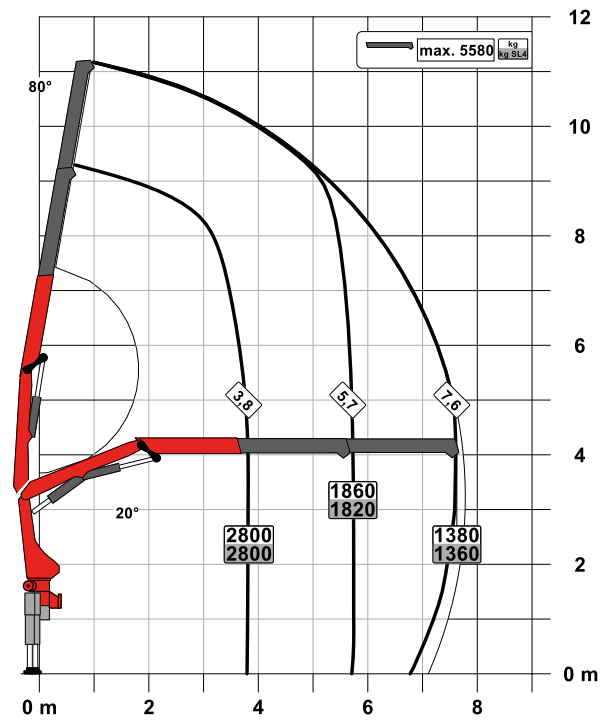
PK 12.001 SLD 3 (NON-CE)

PERFECT DIMENSIONS

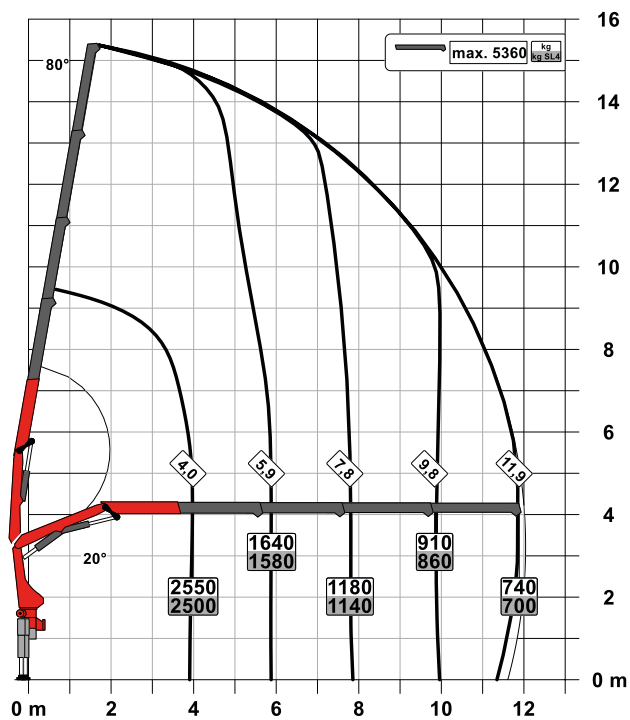
STD

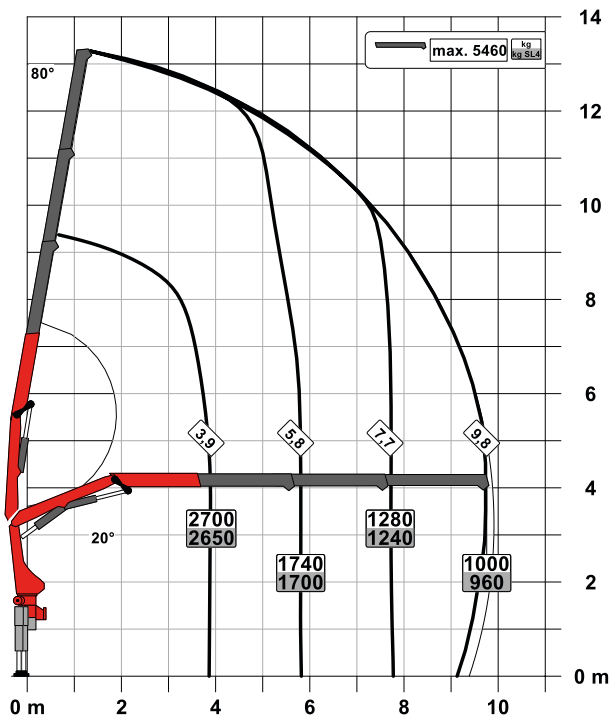


A



C



B

SLD 3 (NON-CE)

- Single Link
- M-HPLS
- Paltronic overload protection
- NON-CE model

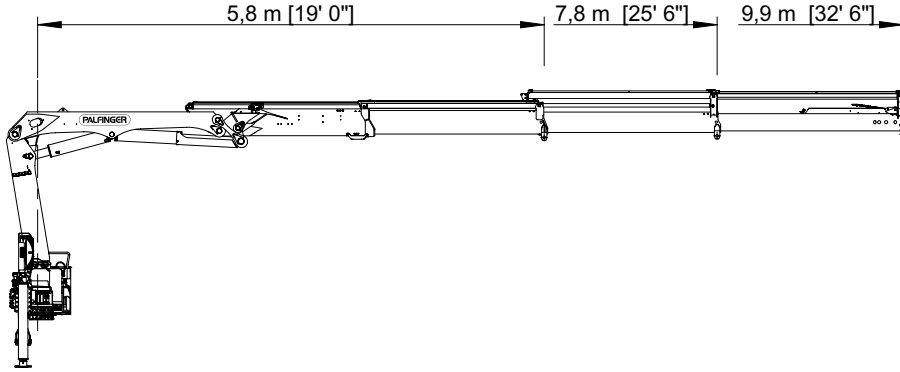
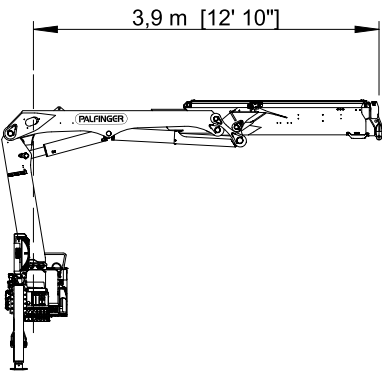
Technical specifications

EN 12999 HC1 HD4/S2

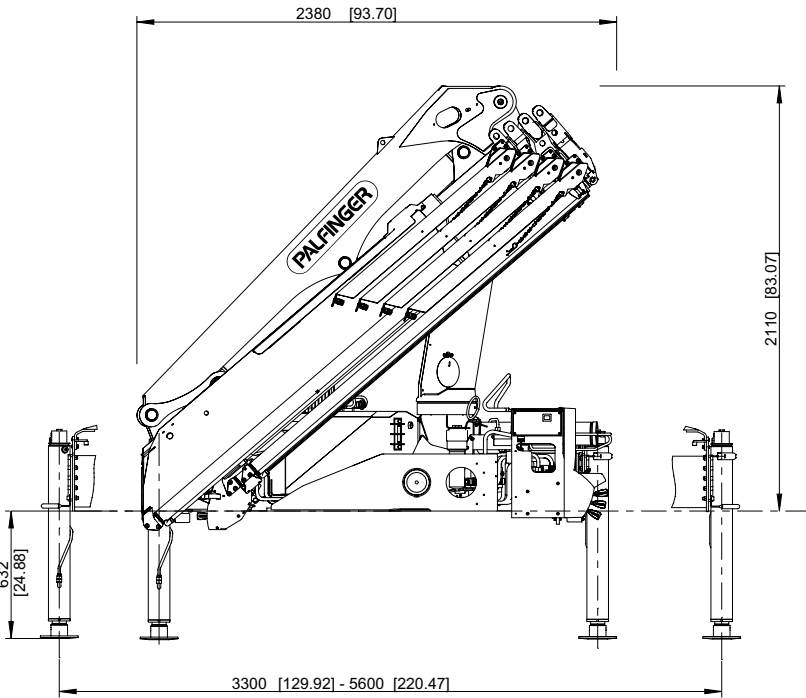
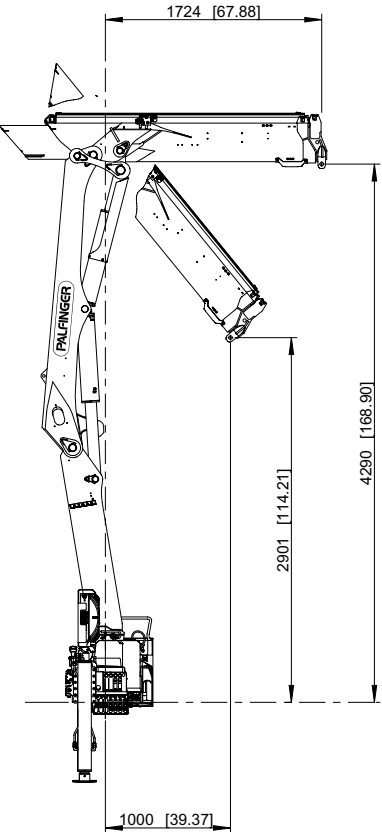
Max. lifting moment	11.1 mt/108.6 kNm	80090 ft.lb
Max. lifting capacity	5700 kg/55.9 kN	12570 lb
Max. hydraulic outreach	12.0 m	39' 6"
Max. manual outreach	15.9 m	52' 2"
Slewing angle	400°	
Slewing torque	1.3 mt/12.7 kNm	9370 ft.lb
Stabiliser spread (std./max.)	3.3 m/5.6 m	10' 10"/18' 4"
Fitting space required (std.)	0.72 m	2' 4"
Width folded	2.32 m	7' 7"
Max. operating pressure	350 bar	5075 psi
Recommended pump capacity	from 30 l/min to 45 l/min	7.9 US gpm 11.9 US gpm
Dead weight (std.)	1140 kg	2510 lb

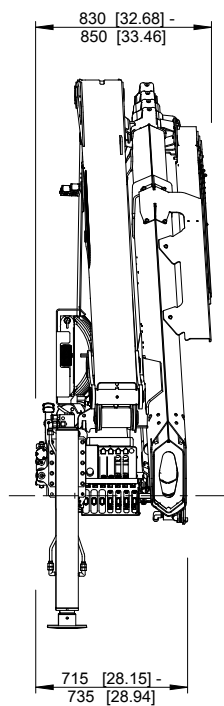
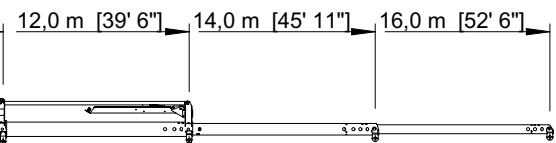
PERFECT DIMENSIONS

EXTENSION BOOM VARIATIONS

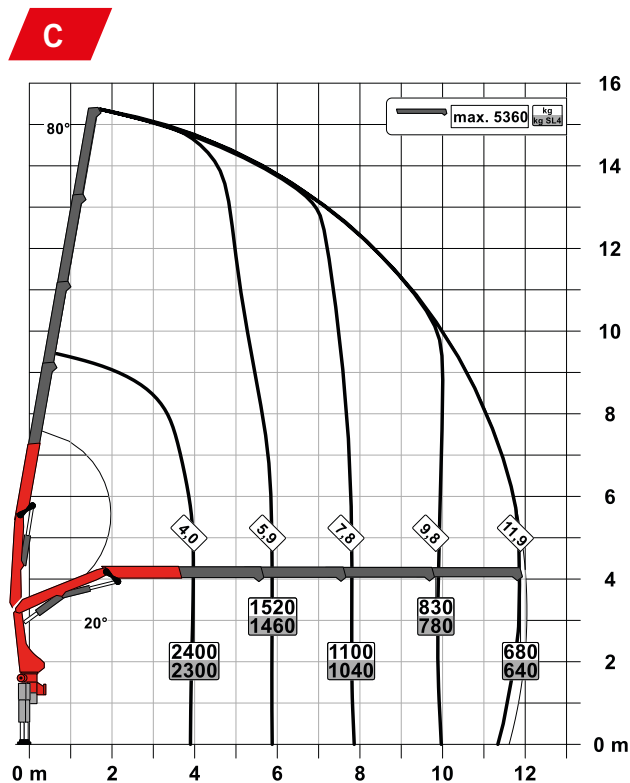
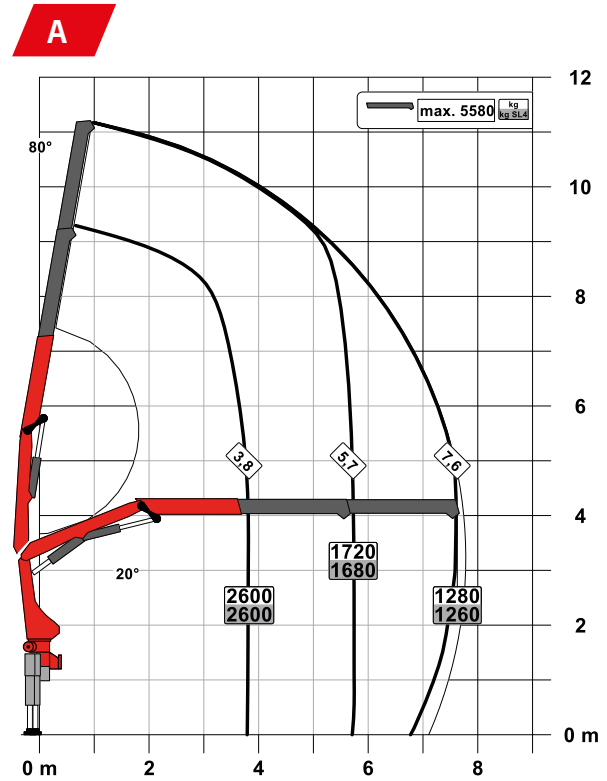
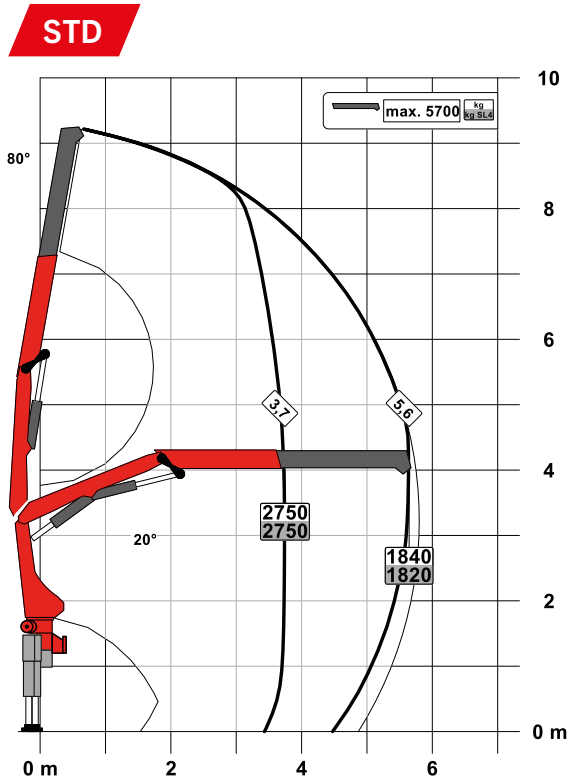


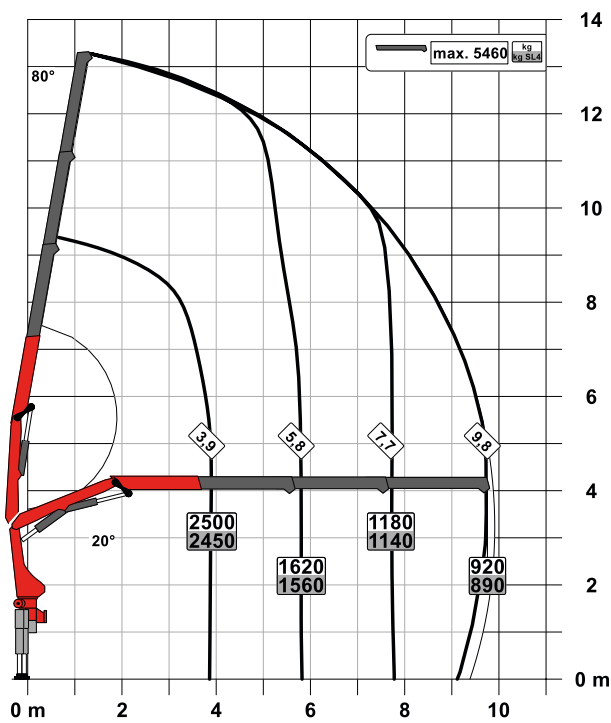
DIMENSIONS





PERFECT DIMENSIONS



B

SLD 3

- Single Link
- Paltronic overload protection
- Optional:
 - Stability monitoring system ISC-S (standard for CE), HPSC-L, HPSC-E
 - High stand control
 - Radio remote control
 - Rope winch 1.5t on the knuckle boom
- NON-CE and CE model

Technical specifications

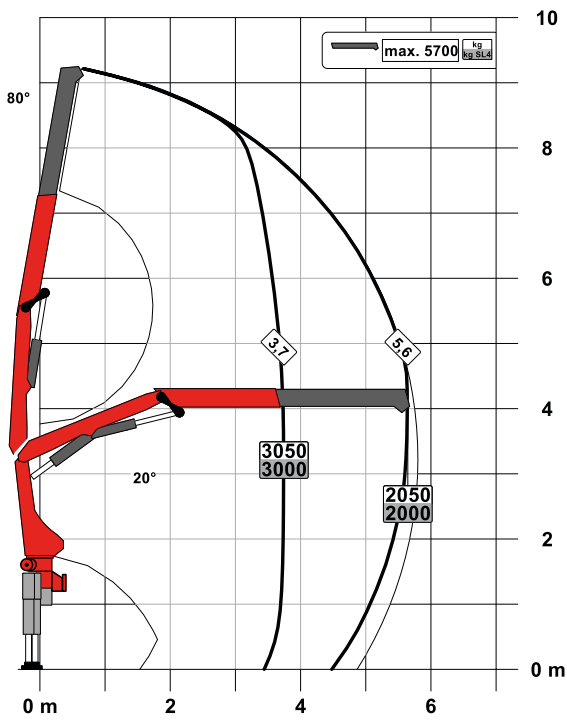
EN 12999 HC1 HD4/S2

Max. lifting moment	10.3 mt/101.4 kNm	74740 ft.lb
Max. lifting capacity	5700 kg/55.9 kN	12570 lb
Max. hydraulic outreach	12.0 m	39' 6"
Max. manual outreach	15.9 m	52' 2"
Slewing angle	400°	
Slewing torque	1.3 mt/12.7 kNm	9370 ft.lb
Stabiliser spread (std./max.)	3.3 m/ 5.6 m	10' 10"/ 18' 4"
Fitting space required (std.)	0.72 m	2' 4"
Width folded	2.32 m	7' 7"
Max. operating pressure	330 bar	4785 psi
Recommended pump capacity	from 30 l/min to 45 l/min	7.9 US gpm to 11.9 US gpm
Dead weight (std.)	1140 kg	2510 lb

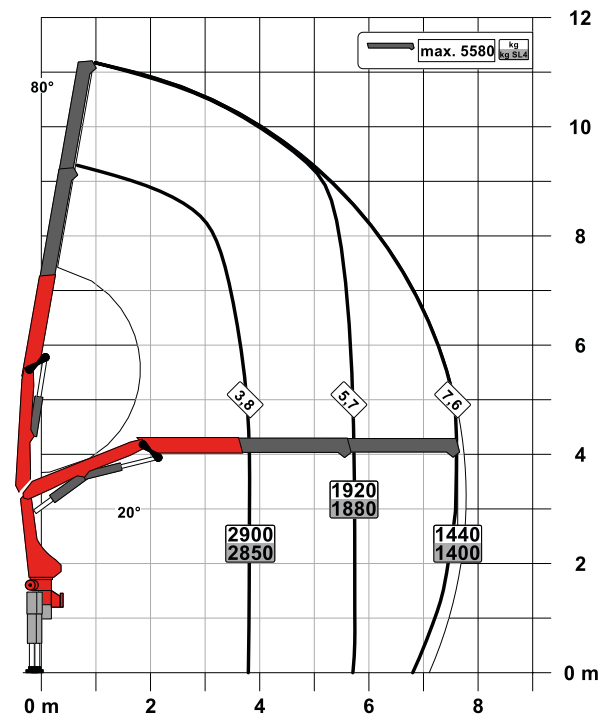
PK 12.501 SLD 5

PERFECT DIMENSIONS

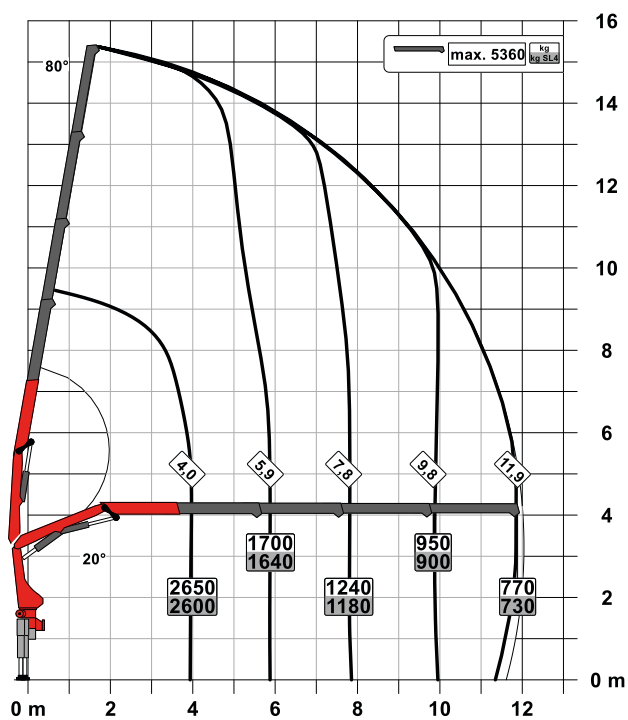
STD

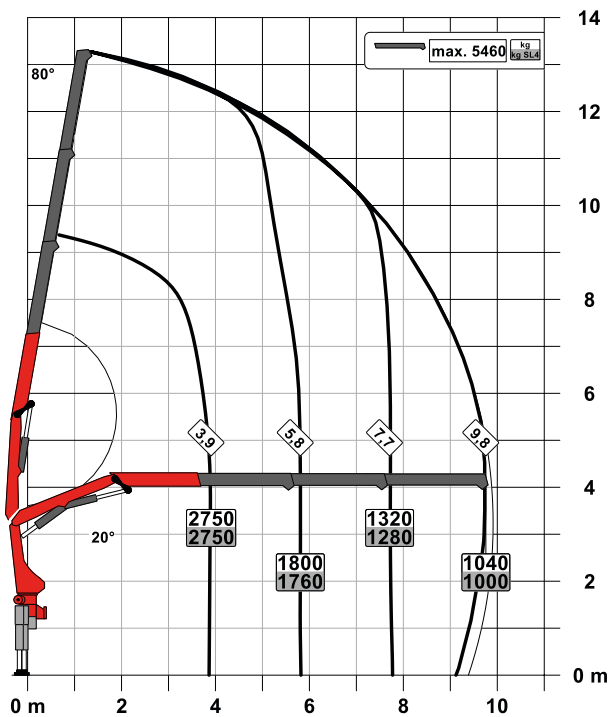


A



C



B

SLD 5

- Single Link
- Paltronic overload protection
- E-HPLS
- Load Sensing valve
- Radio remote control with LED display
- Optional:
 - Stability monitoring system ISC-S (standard for CE), HPSC-L, HPSC-E
 - Rope winch 1.5t on the knuckle boom
- NON-CE and CE model

Technical specifications

EN 12999 HC1 HD4/S2

Max. lifting moment	11.4 mt/112.2 kNm	82160 ft.lb
Max. lifting capacity	5700 kg/55.9 kN	12570 lb
Max. hydraulic outreach	12.0 m	39' 6"
Max. manual outreach	15.9 m	52' 2"
Slewing angle	400°	
Slewing torque	1.3 mt/12.7 kNm	9370 ft.lb
Stabiliser spread (std./max.)	3.3 m/5.6 m	10' 10"/18' 4"
Fitting space required (std.)	0.72 m	2' 4"
Width folded	2.32 m	7' 7"
Max. operating pressure	360 bar	5220 psi
Recommended pump capacity	from 45 l/min to 60 l/min	11.9 US gpm to 15.9 US gpm
Dead weight (std.)	1170 kg	2580 lb

KP-PK11/12SLDM3+EN

Cranes shown in the leaflet are partially optional equipped and do not always correspond to the standard version. Country-specific regulations must be observed. Dimensions may vary. Subject to technical changes, errors and translation mistakes.

PK RANGE

VERSATILE SMALL CRANES WITH OPTIMISED POWER-TO-WEIGHT RATIO FOR LIGHT- WEIGHT COMMERCIAL VEHICLES

LIFETIME EXCELLENCE



LIFETIME EXCELLENCE

PALFINGER loader cranes are convincing due to their superior life-cycle performance. They are the most economical and also the most reliable over the entire product life. From solution finding to resale.

- **Better solutions**
- **Better efficiency**
- **Better ergonomics**
- **Higher availability**
- **More reliability**
- **Better ecology**
- **Higher serviceability**
- **Higher value retention**



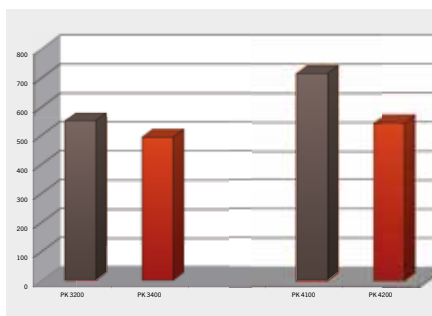
For further information please visit: www.palfinger.com/thebrand

- High outreach with up to four hydraulic extensions
- Optimised dead weight
- Small overall width for use in inner city areas
- High value retention due to coating technology



NUMEROUS DESIGN VARIANTS OPEN UP NEW RANGES OF APPLICATIONS

12 Highlights



Dead weight

Maximum efficiency

Optimised lifting power to dead weight ratio means increased payload on the truck. The efficiency of the vehicle increases for every single job.



High outreach

Increase in working range

The PK 3400 and PK 4200 are available with up to four hydraulic extensions. This allows an outreach of 9.8 m.



Coating technology

Top quality surface protection at a glance

The KTL coating lays the foundation for a perfect surface protection. Afterwards the components are either coated in the powder-coating facility or are finished with a two-components-topcoat. High value retention and excellent corrosion protection for the whole life of a crane.



Control console

Communication with the operator

Hydraulic proportional control valve with five control functions and a hydraulic emergency shut-off function. The crane can be operated from both sides.



Hydraulic overload protection

In-built safety function

When the load limits are reached, the optional overload protection function stops all movements that could further increase the lifting moment.



Internal oil feeds

Maximum protection thanks to compact design

The internal oil ducts enable a compact extension boom system design and ensure maximum protection against damage.



Radio remote control

Communication with the operator

The PK 3400 and PK 4200 are available with two different radio remote control versions. This provides the best-possible overview of the loading process and ensures higher efficiency in use.



Cable winch

The perfect complement

To extend the potential range of applications, a cable winch is available as an option for the PK 3400 and PK 4200. With a lifting power of 800 kg the winch is specially designed for small cranes. If required, it can be fitted with an extension stop and limit switch.



Hose equipment for attachments

Versatile and user-friendly

The hose equipment for the PK 3400 and PK 4200 offers an easy means of connecting auxiliary equipment. The hose equipment is guided in hose trays for protection.



Stabilizer system

For optimum stability

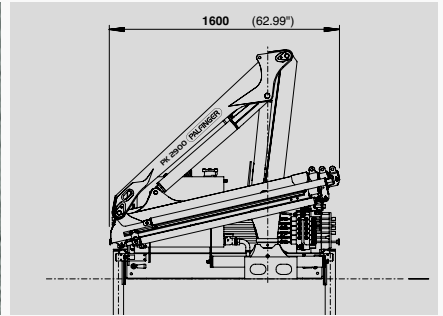
The PK 3400 and PK 4200 are available with two stabilizer widths to ensure optimum stability at all times. All models can be fitted with tiltable or extended stabilizer jacks.



Tiltable stabilizer plates

Better adaptation to the ground

All stabilizers are fitted with tiltable stabilizer plates as standard. They are assembled on a ball joint and can be tilted by up to 10°. This reduces the pressure on the ground.



Small overall width

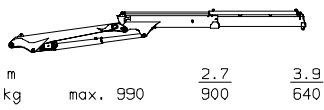
Mounting on narrow vehicles

With a crane width of 1600 mm, the PK 2900 can even be used on narrow vehicles. It is typically used in the building materials trade, horticulture and in inner city areas.

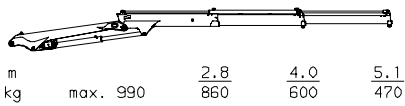
PK 2900

PERFORMANCE

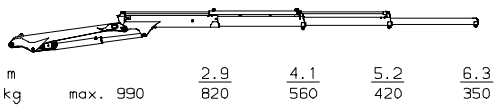
EXTENSION BOOM VARIATIONS



STD

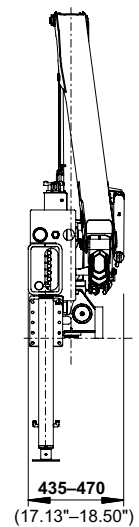
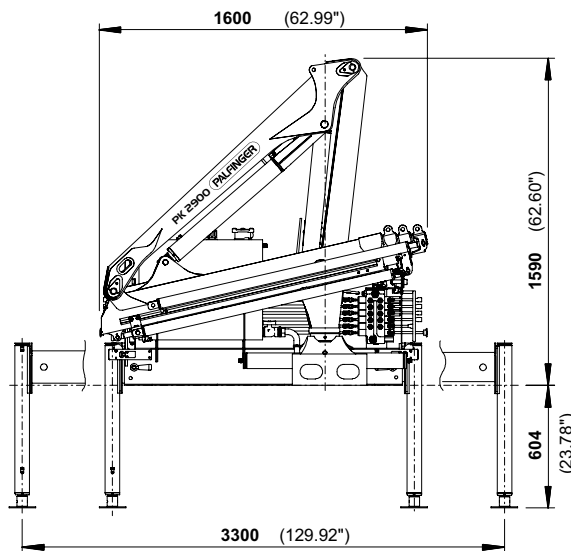
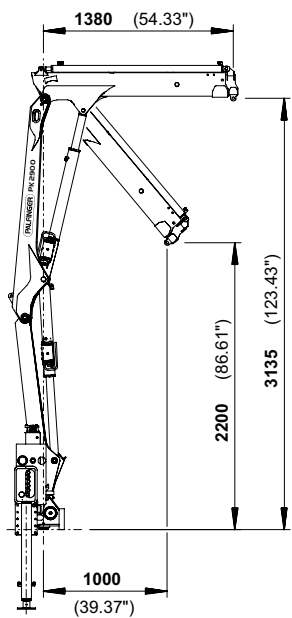


A



B

DIMENSIONS



Technical specifications

EN 12999 H1-B2

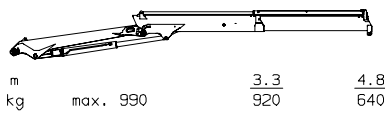
Max. lifting moment	2.5 mt/24.5 kNm	18090 ft.lbs
Max. lifting capacity	990 kg/9.7 kN	2180 lbs
Max. hydraulic outreach	6.4 m	20' 12"
Slewing angle	370°	
Slewing torque	0.30 mt/3.1 kNm	2290 ft.lbs
Max. stabilizer spread	3.3 m	10' 10"
Fitting space required (std.)	0.44 m	1' 5"
Width folded	1.60 m	5' 3"
Max. operating pressure	250 bar	3625 psi
Recommended pump capacity	10 l/min	2.6 US gal./min
Dead weight (std.)	374 kg	820 lbs



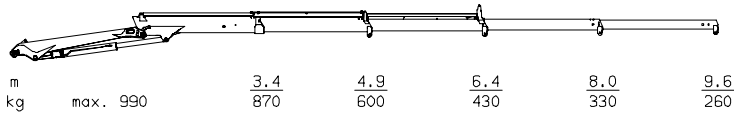
PK 3400

PERFORMANCE

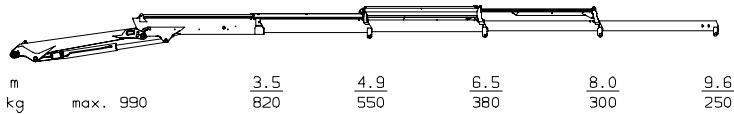
EXTENSION BOOM VARIATIONS



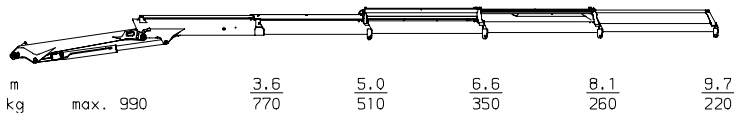
STD



A - V1, V2

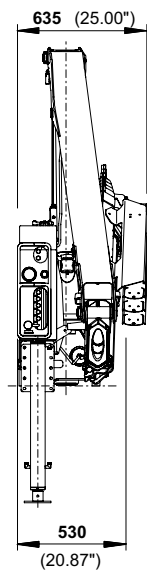
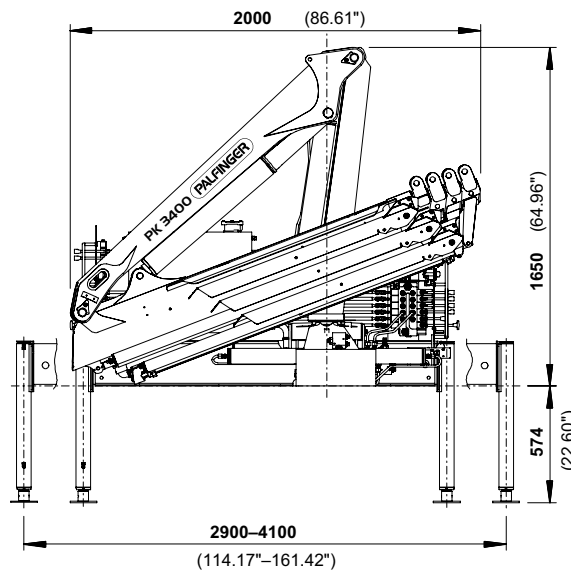
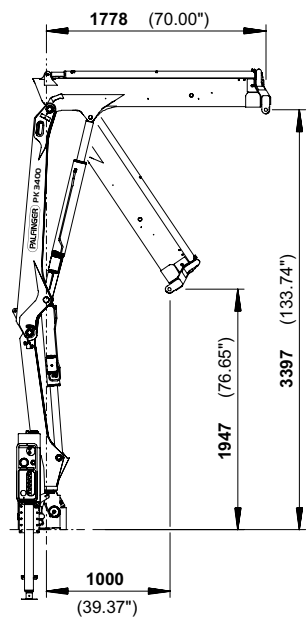


B - V1



C

DIMENSIONS



Technical specifications

EN 12999 H1-B3

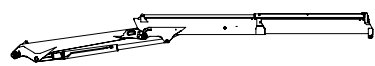
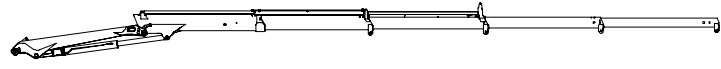
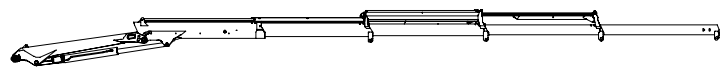
Max. lifting moment	3.1 mt/30.4 kNm	22430 ft.lbs
Max. lifting capacity	990 kg/9.7 kN	2180 lbs
Max. hydraulic outreach	9.8 m	32' 2"
Max. manual outreach	9.8 m	32' 2"
Slewing angle	370°	
Slewing torque	0.40 mt/3.9 kNm	2890 ft.lbs
Stabilizer spread (std./max.)	2.9 m/9' 6"	4.1 m/13' 5"
Fitting space required (std.)	0.53 m	1' 9"
Width folded	1.90 m	6' 3"
Max. operating pressure	250 bar	3625 psi
Recommended pump capacity	15 l/min	4.0 US gal./min
Dead weight (std.)	447 kg	990 lbs



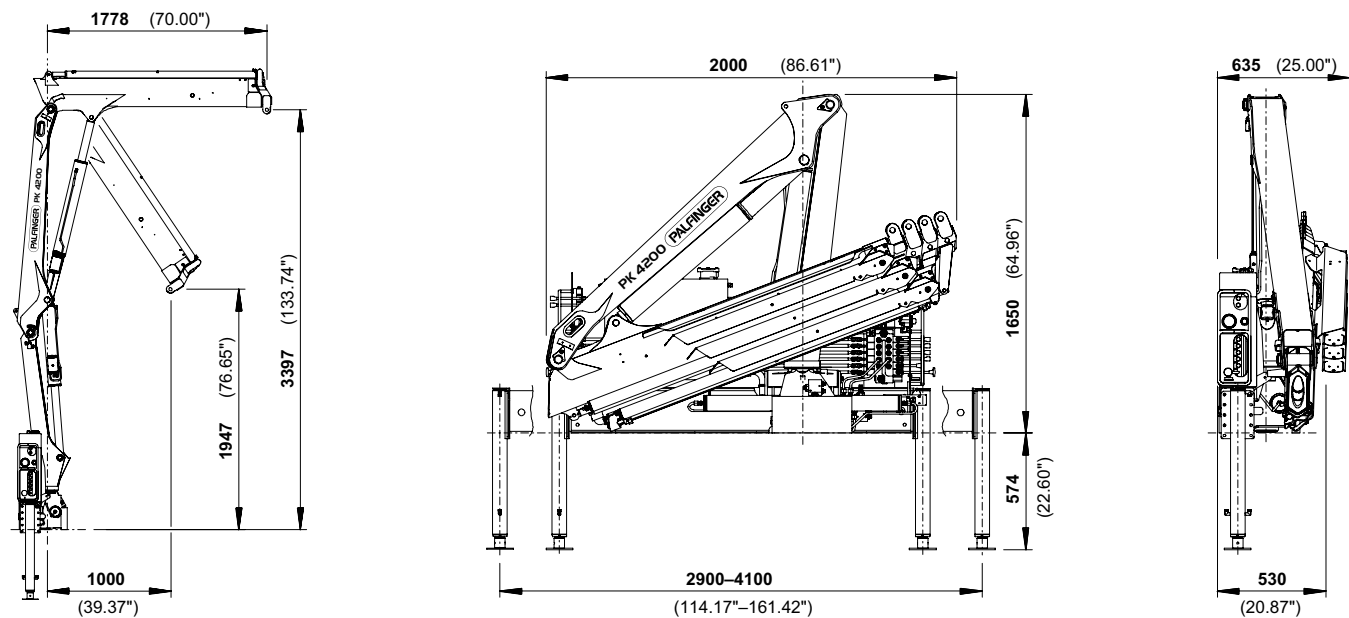
PK 4200

PERFORMANCE

EXTENSION BOOM VARIATIONS

						STD
m		3.3	4.8			
kg	max. 990	990	820			
						A - V1, V2
m		3.4	4.9	6.4	8.0	9.6
kg	max. 990	990	760	550	440	350
						B - V1
m		3.5	4.9	6.5	8.0	9.6
kg	max. 990	990	710	500	420	330
						C
m		3.6	5.0	6.6	8.1	9.7
kg	max. 990	990	660	460	370	300

DIMENSIONS



Technical specifications

EN 12999 H1-B3

Max. lifting moment	3.9 mt/38.3 kNm	28220 ft.lbs
Max. lifting capacity	990 kg/9.7 kN	2180 lbs
Max. hydraulic outreach	9.8 m	32' 2"
Max. manual outreach	9.8 m	32' 2"
Slewing angle	370°	
Slewing torque	0.40 mt/3.9 kNm	2890 ft.lbs
Stabilizer spread (std./max.)	2.9 m/9' 6"	4.1 m/13' 5"
Fitting space required (std.)	0.53 m	1' 9"
Width folded	1.90 m	6' 3"
Max. operating pressure	250 bar	3625 psi
Recommended pump capacity	15 l/min	4.0 US gal./min
Dead weight (std.)	491 kg	1080 lbs





KP-HPKPKRANGEM2+EN

Cranes shown in the leaflet are partially optional equipped and do not always correspond to the standard version. Country-specific regulations must be observed. Dimensions may vary. Subject to technical changes, errors and translation mistakes.